

Historic, Archive Document

Do not assume content reflects current scientific knowledge, policies, or practices.

Spring Hill Nurseries

Tippecanoe City, Ohio

FALL CATALOG OF BARGAINS

Trees Roses Shrubs Vines Fruits *ETC.*

SEP 11 1936

Remember

WE PAY
THE POSTAGE

SATISFACTION GUARANTEED

Save Money on Rock Plants

Good rock plants are scarce. For anyone wanting a good selection, we strongly advise the collection offered below.

SPECIAL OFFER

- 1 Arabis Alpina.....White
- 1 Callirhoe.....Red
- 1 Blue Bells of Scotland...Blue
- 1 Dianthus Deltoides.....Red
- 1 Linum Perenne.....Blue
- 1 Myosotis Alpestris.....Blue
- 1 Iceland Poppy.....Mixed
- 1 Rock Rose.....Salmon
- 1 Tunica Saxifraga.....Lavender
- 1 Viola Cornuta.....Yellow
- 1 Alyssum Saxatile.....Yellow
- 1 Creeping Phlox.....Pink

12—1 of each for \$2.00 prepaid
24—2 of each for \$3.50 prepaid





New Hybrid DELPHINIUMS

Imported Strains

Perhaps no other flower has in recent years undergone the transformation and improvement as has the Delphinium.

These superb new varieties, in all shades of blue, lavender, violet, and purple, are truly wonders of the floral kingdom.

In our plantings, we have had many flowers this year, with a blooming stem 6 feet or more in height, and up to 3½ feet of flower on the stem.

FROM PHOTO OF OUR NEW HYBRID DELPHINIUMS

LIST OF VARIETIES

BLUE BOY. A new introduction of rich deep blue with white eye. The flowers are single, very large, densely massed on long stems. It is one of the thriftiest of the new Delphiniums, which, with its deep blue color, makes it a very desirable variety. Clumps, 50c each; 3 for \$1.25, postpaid.

MILLICENT BLACKMORE. This is one of the most splendid new varieties. The long spikes are of perfect form, the pipes beautifully placed and enormously large. The color is a soft combination of blue and mauve, with a large black center. Clumps, 75c each; 2 for \$1.25, postpaid.

WONDERFUL HYBRIDS. Here offered are the newest, the best and the finest to be secured anywhere. The range of colors varies from the palest shade of blue to the deepest indigo blue and royal purple with many intermediary pastel tones of mauve, pink and lavender blendings. Among these new hybrids are flowers of huge size in both single and double forms. This strain has been raised from seed saved from the finest named kinds in creation. Visitors at our nursery proclaim them the best they have ever seen. Those who wish to perfect their already much prized borders cannot afford to overlook these wonderful hybrids. Mixed colors, 45c each; 3 for \$1.25, postpaid.

ROSE TREE OF CHINA

The **ROSE TREE OF CHINA** (*Prunus Triloba*) is the most beautiful and showy of all small trees. It begins to bloom before the leaves appear, in the spring, being literally covered with very double rose-like pink flowers. As an ornament from early spring until late fall it has few equals. This symmetrically formed, graceful little tree grows usually to a height of but 8 feet, and is attractive as a specimen or when planted in groups or shrub border. It is hardy and easily grown, and no lawn is so small that room can not be found for at least one of these wonderful trees. Many who have seen it declare it to be the most beautiful tree they have ever seen. The rose-like blossoms make fine cut flowers.

Choice trees for \$1.00 each; 3 for \$2.50, by parcel post, postpaid.

HARDY CACTUS

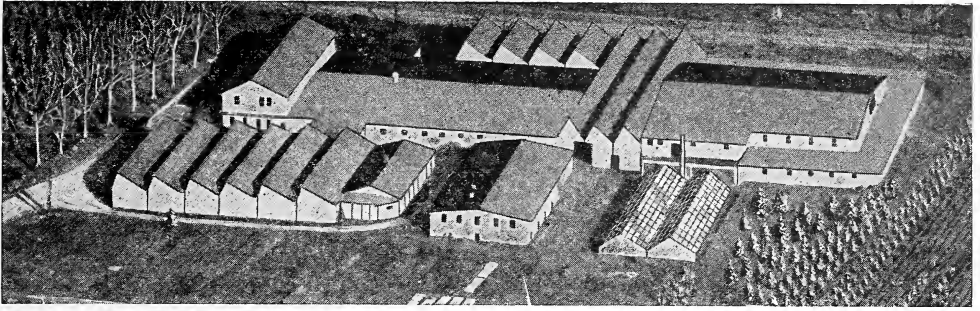
OPUNTIA RAFINESQUI—Will stand 20 degrees below zero. Can be grown indoors or outdoors. Fine for rockeries, border for evergreens, banks, perennial beds, etc. It is evergreen, producing from June till September, large semi-double red and yellow flowers 4 inches across. An ornamental interesting plant for outdoor culture, easily grown. We have a limited supply of these for customers only, so order soon. 50c each; 3 for \$1.25, postpaid.

THE PLANT



THE FLOWER





AN AIRPLANE VIEW OF OUR PACKING SHEDS COVERING THREE ACRES OF FLOOR SPACE

TO OUR FRIENDS AND CUSTOMERS

A customer of ours buys and sells real estate, old houses usually, that do not have a ready sale. Sometimes he paints them, but he always plants them. A few evergreens, a few shrubs, but he says they make a world of difference in finding a buyer.

The appeal that trees and plants make to the home owner cannot be defined in words. Sentiment plays a very large part in home ownership, and trees and flowers have their appeal much more so than brick, and stone, and wood.

We believe that you are vitally interested in planting your home grounds. The knowledge and experience we have gained in growing Nursery Stock for the last seventy years is at your disposal. Write us for advice.

This catalog should be of help to you as it guarantees you good stock at the very lowest price at which good Nursery Stock can be sold.

FOR YOUR CONVENIENCE

INFORMATION!

EVERYTHING in this catalog that can be conveniently sent to you by parcel post will be delivered to your door. Postage Paid.

WEST OF ROCKY MOUNTAINS — Postage rates are very high west of the Rocky Mountains, and therefore we ask our customers from these points to add 10% to the price of Postpaid varieties of plants in this catalog.



INFORMATION!

EVERYTHING in this catalog that can be sent Parcel Post is marked and will be shipped to you postpaid.

TREES AND EVERGREENS and other items in this catalog too large to be sent by Parcel Post are plainly marked shipped express. Not prepaid.

OUR GUARANTEE

We guarantee all our stock to be true to name, good, clean and healthy first-class stock. We also guarantee it to reach you in good growing condition. If at any time found otherwise we will gladly replace the stock or refund the purchase price. It is mutually agreed and understood that we cannot be held responsible for a greater amount than the original purchase price.

CERTIFICATE OF INSPECTION

No. 260

Columbus, Ohio, August 17, 1929.

THIS IS TO CERTIFY that the nursery stock grown by SPRING HILL NURSERIES, PETER BOHLENDER & SONS, Props., of Tippecanoe City, County of Miami, State of Ohio, consisting of general nursery stock, has been inspected by a duly authorized inspector in compliance with Section 1126, General Code, and has been found apparently free from dangerously injurious insects and plant diseases.

Permission is hereby granted the above mentioned nursery firm to sell and ship nursery stock which has been inspected for the year ending September 15, 1929.

This certificate, granted under the provisions of Section 1135, General Code, is invalid after September 15, 1930, and may be revoked earlier for cause.

N. B. All raspberry stock which may be covered by this certificate has been inspected twice, at least thirty days intervening between the two inspections.

E. C. COTTON,
Chief of Division.

PERRY L. GREEN,
Director of Agriculture.

A new certificate will be issued after September 15, 1930.

ROCK PLANTS

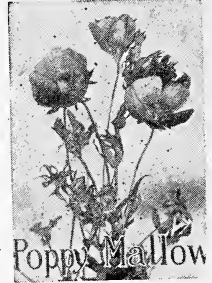


Campanula Harebell

CAMPANULA

(Harebell)—A pretty species growing in compact tufts, not exceeding 8 inches high; flowers clear blue, held erect on wiry stems. It begins blooming in June, continuing until October. As an edging for a hardy border or for the rockery it is unsurpassed.

2 yr. old, 25c each; 3 for 70c. Prepaid.

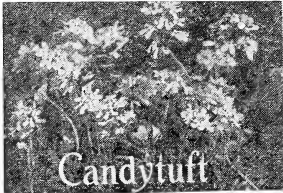


Poppy Mallow

CANDYTUFT

(Hardy)—Hardy form of old-fashioned Candytuft, growing 8 to 10 inches in height with dense heads of bright flowers early in the spring. Full sun or part shade.

2 yr. old, 17c each; 3 for 50c. Prepaid.



Candytuft

CALLIRRHOE

(Poppy Mallow) *Involucrata* — Trailing plant, with finely divided foliage and large, saucer-shaped flowers of bright rosy crimson, with white centers, which are produced all summer and fall. 2 yr. old, 25c each; 3 for 70c. Prepaid.

SEDUM (Stonecrop)

The dwarf varieties are charming plants for sunny positions in the rockery, etc., and the taller kinds make effective color groups in the border. They thrive in almost any soil. They are especially fond of sand and full sun, and may be considered the backbone of the American rock garden.

DWARF VARIETIES

ACRE (Golden Moss)—Much used for covering graves; foliage green; flowers bright yellow.

ALBUM — Dwarf and spreading; thick, waxy, round foliage, white flowers; good rock plant.

KAMSCHATICUM — Orange-yellow flowers, with prostrate green foliage, turning golden in autumn.

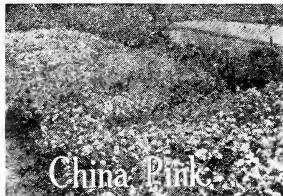
SIEBOLDI — Round, succulent, glaucous foliage; bright pink flowers in August and September.

SPURIUM COCCINEUM—A beautiful rosy crimson flowered form; July and August. 6 in.

Price of Sedums, 2 yr. old, 25c each; 3 for 60c. Prepaid.

CHINA PINK

It is very compact in growth and makes a cushion of glaucous leaves from which in May, spring the sweet smelling, rose colored flowers. It varies as much as from four inches to ten inches in height. It is easily grown and very fine for the rock garden. 2 yr. old, 20c each; 3 for 55c. Prepaid.



China Pink

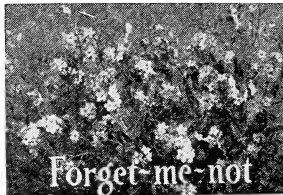
SEA LAVENDER

STATICE LATIFOLIA—A valuable plant either for the border of rockery, with tufts of leathery leaves and immense candelabra-like heads, frequently 1½ feet high and 2 feet across, of purplish blue, minute flowers during July and August. These, if cut and dried, last in perfect condition for months.

2 yr. old, 20c each; 3 for 55c. Prepaid.

MYOSOTIS

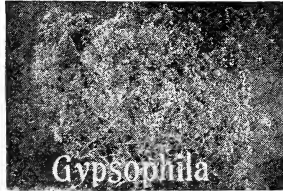
(Forget-me-not) — Will live through the winter with protection given to Pansies. Does best in damp location. Blossoms all summer, 10 inches. Shade or semi-shade. May to frost. 2 yr. old, 17c each; 3 for 50c. Prepaid.



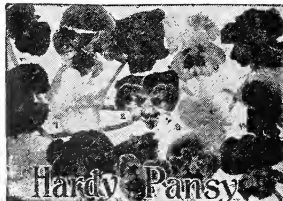
Forget-me-not

GYPSOPHILA

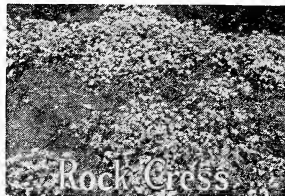
BABY'S BREATH—Very branching or spreading slender shrubs, of very easy culture, and very desirable where a mass of delicate misty white bloom will fill a bare place. 2 yr. old, 17c each; 3 for 50c. Prepaid.



Gypsophila



Hardy Pansy



Rock Cross



Sea Lavender

HARDY PANSY

VIOLA CORNUTA—A new plant of rare merit perfectly hardy, starting to bloom just as soon as the snow leaves in the spring and continuing until cold weather in the late fall. A wide range of color, the same as the annual variety. A truly remarkable plant and we know they will please you. Seems to do well anywhere they are planted.

2 yr. old, 22c each; 3 for 60c. Prepaid.

AUBRETIA (Rock Cross)

One of the daintiest and most delicately beautiful of all dwarf, creeping plants for carpeting beds or rockeries, forming brilliant sheets of violet, crimson or rose for many weeks. Massed on rockeries or in borders with white Arabis and yellow Alyssum, it forms a charming contrast. A gem for planting in crevices of rocks or wall, forming a cataract of color.

2 yr. old, 25c each; 3 for 70c. Prepaid.

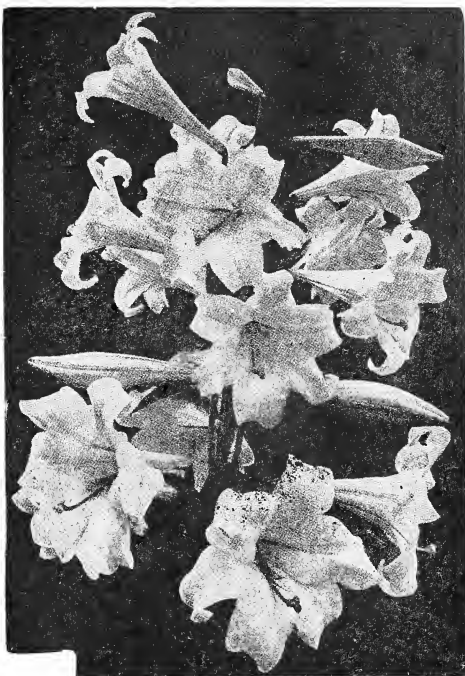
LILIES FOR FALL PLANTING

REGAL LILY—Bailey's Cyclopedia of Horticulture says of it: "One of the most beautiful of all known Lilies, the exquisite blending of tints and colors forming a charming contrast with the rich, deep green foliage." Will exist in one location without transplanting, and will grow and do well where most other Lilies are failures. Mature bulbs produce from five to fifteen flowers on a single stem, which retain their freshness over quite a long period. Blooming size bulbs. 36c each; 3 for \$1.00.

LILIUM CANDIDUM (Madonna Lily)
—This well known and much sought for Lily is considered one of the choicest of the Lily tribe and one of the easiest to grow. Trumpet-shaped blooms are pure white and borne in spikes on tall, rigid, leafy stems. Bulbs should be planted as early as possible in the autumn. 35c each; 12 for \$3.50. Prepaid.



Regal Lily on 6-Foot Stems



Lilium Candidum



FINE GERMAN IRIS

Of late years, many new and beautiful varieties of German Iris have been introduced. Here is your chance to secure good sorts at a real low price. 27 each; 3 for 80c. Prepaid.

Fine Named Sorts 27c Each, 3 for 80c, Prepaid

- | | |
|--|--|
| CAPRICE , rosy red. | MRS. NEWCOMER , deep golden yellow. |
| PARISIANA , white dotted lilac purple. | PALLIDA DALMATICA , solid blue. |
| HER MAJESTY , pink | PERFECTION , Light blue and dark violet. |
| ISOLENE , rose, bronze and mauve. | QUEEN MARY , soft rosy lilac. |
| MAD. CHEREAU , white with blue edge. | VIOLACEA GRANDFL. , violet blue self color. |
| MRS. DARWIN , white with lavender center. | |

SIBERIAN IRIS

(2 Colors)

Good to use as a border or around pool. White and dark blue. 27c each; 3 for 80c. Prepaid.

JAPANESE IRIS

Of all Irises, the Japanese has, without question the most wonderful bloom. The flowers are borne on long graceful stems, and for foliage effect, or cut flowers this species is far superior to the common kinds. We are offering only two varieties which are noted for their free blooming habit.

PURPLE GOLD BANDED—A beautiful deep shade of purple with a gold band across the petals. An attraction to any garden. 27c each; 3 for 80c. Prepaid.

BLUE—A bright blue flower, which holds its color and remains fresh a long time after it is cut. 27c each; 3 for 80c. Prepaid.

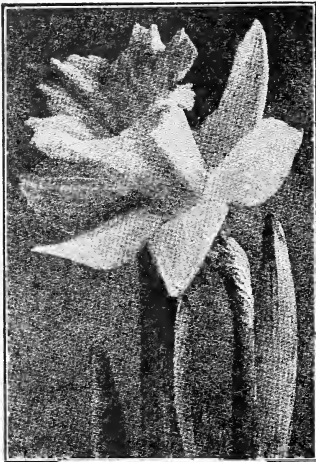
MAHONIA AQUIFOLIA

(Oregon Holly Grape)

A low dense, bushy evergreen shrub with fresh green holly like leaves. The leaves turn to a bronze and purple color in the fall and winter months. It has clusters of bright yellow flowers in May, followed by bluish purple berries in the fall and winter. It will do equally well in sun or shade and is always greatly admired by every one.

Price, 3-yr.-old plants, 15 to 18 in., \$1.00 each; 3 for \$2.50. Special 2-yr.-old plants, 6 to 10 in., 30 each; 3 for 80c. Prepaid.

FALL BULBS



King Alfred

NARCISSUS

Narcissi are exceedingly hard to obtain owing to the embargo against them.

KING ALFRED—Large golden yellow, one of the best.

GLORY OF SASSENHEIM—Bi-color. Free flowering.

QUEEN OF ENGLAND—Fine for naturalizing.

SPRING GLORY—White perianth, long petals and long yellow trumpet. Strong stem. Early

Price, 10 for \$1.50; 25 for \$3.50; 100 for \$12.00.

Mixed. Our selection of good varieties. 10 for \$1.00; 50 for \$4.50; 100 for \$8.50.

HYACINTHS

RED (Single)—Flowers borne well on stiff well-formed spike.

WHITE (Single)—The flower heads are well filled.

BLUE (Single)—Beautiful blooms that fill the air with a fragrance that cannot be excelled. Bells are perfect in shape and tightly massed on spike.

PINK (Single)—A delicate shade of pink.

YELLOW (Single)—A beautiful flower. 15c each; 50 for \$6.50; 100 for \$12.50. Prepaid.

GRAPE HYACINTHS

HEAVENLY BLUE—While there are several kinds of Muscari, we consider this variety the best for mass planting. Their flowers open just about the time that the Chionodoxas and Crocuses are going. They do very well in the wild garden and also in the grass if it is not too rank. They are nice under trees and along the borders where they may be left undisturbed. Price, 25 for \$2.00, 100 for \$7.50. Prepaid.

DARWIN TULIPS

CLARA BUTT—Salmon-rose. Popular.

DREAM—A delicate shade of lilac. Erect long stems.

ARIADNE—Magnificent brilliant rosy crimson, shaded scarlet, blue base.

FARNCOMBE SANDERS—Brilliant scarlet.

LA TULIPE NOIRE—Dark maroon black. The blackest of all tulips.

PRIDE OF HAARLEM—Bright rose.

Price of Darwin Tulips, 10 for \$1.00; 25 for \$2.25; 100 for \$8.50. Prepaid.

SINGLE EARLY TULIPS

ARTUS—A bright scarlet of great beauty.

CANARY BIRD—Yellow.

COTTAGE MAID—Rose colored flowers.

PRINCE OF AUSTRIA—Brownish orange.

ROSE GRIS DE LIN—Soft rose color.

ROSE LA REINE—Rose.

Price, 10 for 80c; 25 for \$1.80; 100 for \$6.50. Prepaid.

DOUBLE EARLY TULIPS

MIXED—A collection of brightly colored blooms, very beautiful.

Price, 10 for \$1.00; 25 for \$2.00; 100 for \$7.00. Prepaid.

BREEDER TULIPS

BRONZE KING—Dull golden brown, olive base.

FAIRY—Mahogany with orange glow.

MARIE LOUISE—Old rose, flushed orange-salmon, edged bronzy orange, olive base.

Price, 10 for \$1.00; 25 for \$2.25; 100 for \$8.50. Prepaid.

CROCUS

BLUE—These beautiful little flowers are the first signs of spring.

WHITE—A majority of white bulbs is preferable, as white attracts the most attention.

YELLOW—Yellow is also recommended, for bright colors are most enjoyed just when the snow is leaving.

Price of Crocus, 25 for \$1.50; 100 for \$3.50. Prepaid.



Hyacinth Double, Red

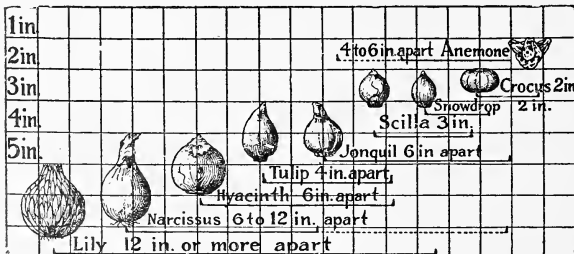
STAR OF BETHLEHEM

STAR OF BETHLEHEM (Ornithogalum Umbellatum)—A bulbous plant, with grass-like foliage. It blooms very early, in April and May, with green and white, star-shaped flowers on six-inch stems, and very profusely. A much desired plant for your rock garden and border beds. It is not particular whether in the shade or in the sun, seemingly doing equally as well in any location. It is wonderful for wild gardens, and makes an attractive ground cover in a location where they can remain undisturbed, as they require no care or cultivation.

Price, 25 for \$2.00; 100 for \$7.00. Prepaid.

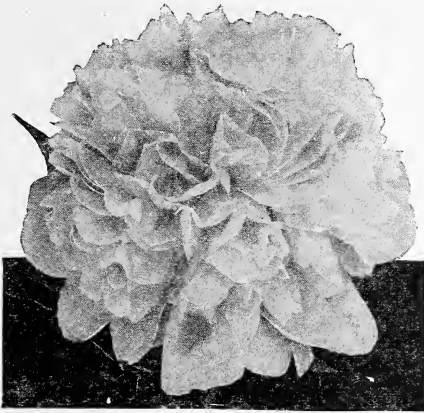
SUCCESS WITH BULBS

To insure your success with bulbs it is essential that they be planted at the proper depth. The chart to the left gives you this information quickly.



A PAGE OF

PEONIES



Festiva Maxima

We are only listing those varieties which have proven through close observation to be the best for general planting.

Peonies should be planted in the fall to be assured of blooms the first year, although spring planting will sometimes produce flowers.

FESTIVA MAXIMA—Rose type. Probably no other Peony is as widely grown as this variety, and none of the whites are as well and favorably known. While the blooms are very fragrant and the stems of a good length, this flower is especially adapted for cut flowers when bouquets are hard to obtain because of the earliness of the season. Color snow-white, center petals of purplish carmine. Include this one. 55c each; 3 for \$1.35. Prepaid.

LOUIS VAN HOUTTEI—This is one of the old standby varieties and needs no introduction. You can make no mistake by planting Louis Van Houttei Peonies because the bright red flowers are always a source of much pleasure and enjoyment. Used as specimen plants their bright red flowers lend just the right amount of color to any lawn or garden. 55c each; 3 for \$1.35. Prepaid.

MODEL OF PERFECTION—Rose type. The guards are of a pale lilac color with centers of milk-white; very fragrant. 55c each; 3 for \$1.35. Prepaid.

JEANNE D'ARC—Crown type midseason. Soft pink, intermingled with sulphur-white and rose. Center spotted carmine. 55c each; 3 for \$1.35. Prepaid.

MESSONIER—Very brilliant crimson full double flowers on stiff, wiry stems. The coloring is wonderfully rich and brilliant. A grand cut flower. 65c each; 3 for \$1.75. Prepaid.

RUBRA SUPERBA—Rose type. Magnificent, brilliant deep crimson, very large full and double, highly fragrant and the best keeper of all. It is decidedly the best late black—should be in every collection. 55c each; 3 for \$1.35. Prepaid.

QUEEN VICTORIA—Bomb Type, early midseason. The best every day white. As a cut flower—a first rate keeper of good size. 55c each; 3 for \$1.35. Prepaid.

TENUIFOLIA FLORE PLENA (Fern Leaf Peonia)—Dazzling crimson red, earliest peony of all. Very double. Has finely cut foliage like a fern, very dwarf, just the plant for your rock garden. \$1.25 each; 2 for \$2.25. Prepaid.

MAD. DE VERNEVILLE (Crouse)—Smooth, white guard petals surrounding a bluish white center. Distinct crimson marks on tips of several petals. Sweet rose-like fragrance which is very pleasing. Good cut flower variety. 75c each; 3 for \$2.00. Prepaid.

ANDRE LAURIES (Crouse)—Very late; rose type, globular bloom of the largest size. Compact. Color dark tyrian rose or solferino-red shading deeper in the center with red reflex guards of same color. An all around good peony. \$1.00 each; 3 for \$2.50. Prepaid.

SPECIAL OFFER

Below we offer three choice double varieties in three colors.

1st PRIZE WHITE—A good sized double white flower and free bloomer. 50c each; 3 for \$1.35. Prepaid.

1st PRIZE PINK—Beautiful shade of pink, double flower, beautiful foliage. 50c each; 3 for \$1.35. Prepaid.

1st PRIZE RED—Very vivid coloring, massive flowers and very spicy. 50c each; 3 for \$1.35. Prepaid.

SPECIAL

ONE EACH OF THE THREE ABOVE

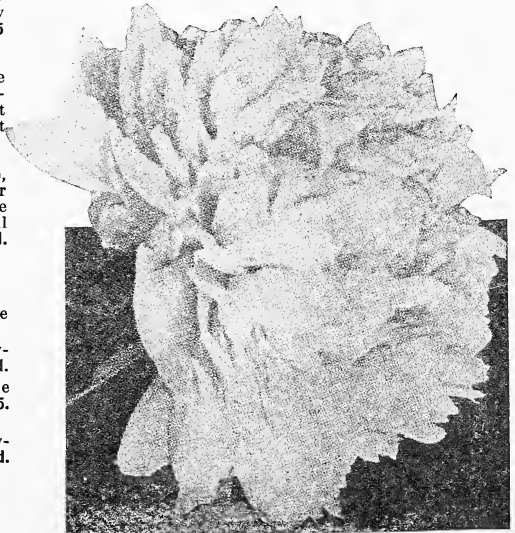
\$1.00



FLORAL TREASURE—A beautiful rose type Peony of hydrangea-pink tinted violet-rose. The blooms are large and compact, making a very showy plant when in full bloom. We sold many of this variety last year, and all of our customers who planted them were enthusiastic in their praises of this beautiful flower. 55c each; 3 for \$1.35. Prepaid.

The Earliest Peony of the Season

OFFICIALIS RUBRA—A brilliant crimson rose-type Peony, blooming three weeks before the earliest of the other varieties. An old favorite of our grandmothers' gardens, and no new Peony has appeared to take its place as to early blooming qualities. It is a sure bloomer, blooming every year, and a wonderful addition to your garden. 85c each; 3 for \$2.35. Prepaid.



Louis Van Houttei

HARDY PERENNIALS

ACHILLEA

OLD FASHIONED FLOWERS

MILLEFOLIUM CERISE ROSEUM — Beautiful cut-leaved foliage. Flowers deep rose, colored and good for October. 17c; 3 for 50c. Prepaid.

PTARMICA (The Pearl) — White flowers larger than above variety. It blooms all summer. Slightly more dwarf. 15 inches. 17c; 3 for 50c. Prepaid.



Achillea



Aster

ASTER

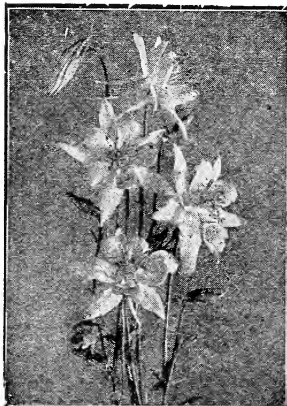
ST. EGWIN — Dense and bushy and blooms from the ground up to the top of the plant. Delicate pink color. 17c ea.; 3 for 50c. Prepaid.

SATISFACTION GUARANTEED

COLUMBINE

AQUILEGIA ENGLISH LONG SPUR — A fine strain, producing distinct strains of purple, blue, red and yellow flowers. 17c each; 3 for 50c. Prepaid.

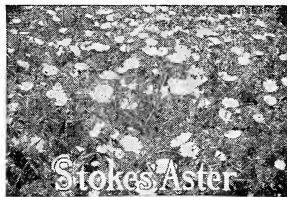
CHRY SANTHA (Yellow - Flowered Columbine) — Flowers are primrose yellow, long spurs. Three to four feet. April to September. 17c each; 3 for 50c. Prepaid.



Columbine

STOKES ASTERS

(Stokesia)—12 to 18 inches high. Flowers large blue and quite showy. Blooms from August till late frost. 17c each; 3 for 50c. Prepaid.



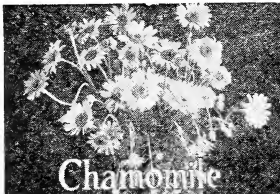
Stokes Aster

BUTTERFLY WEED

ASCLEPIAS TUBEROSA — Beautiful bright orange flowers 1 to 2 feet high. Very hardy blooms. July and August. 17c each; 3 for 50c. Prepaid.



Butterfly Weed



Chamomile

Chamomile

Well known perennials, esteemed for their lavish bloom and exceedingly decorative value in late fall. Yellow. 17c each; 3 for 50c. Prepaid.



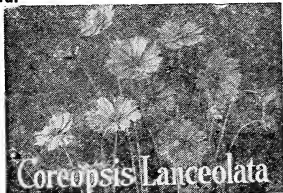
Canterbury Bell

CANTERBURY BELLS

Compact little plants, suitable for edging, rockwork, etc. They like a good, rich soil, and last much longer in bloom if planted in a half-shady place. 17c each; 3 for 50c. Prepaid.

COREOPSIS

LANCEOLATA — Valuable border plant, because of their profusion of showy yellow, hardy and of the easiest culture. One to two feet. June to September. 17c each; 3 for 50c. Prepaid.



Coreopsis Lanceolata

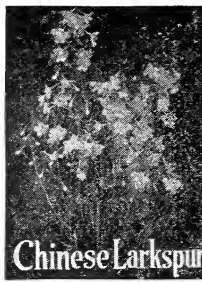
CHINESE LARKSPUR

(Chinese Larkspur) — A very pretty variety with fine feathery foliage and intense blue flowers. Blooms all summer long. Fine for cut flowers. 17c each; 3 for 50c. Prepaid.



CHRYSANTHEMUM

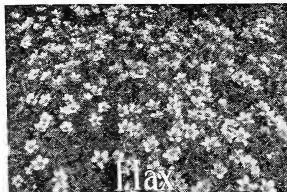
HARDY VARIETIES — Well known perennial, esteemed for their lavish bloom and exceeding decorative value in late fall. Red, white, pink, yellow. 17c each; 3 for 50c. Prepaid.



Chinese Larkspur

PERENNIAL FLAX LINUM PERENNE

—A very desirable plant for the border; grows about 2 feet high, and filled with flowers all summer. We can furnish you in either white or blue. 17c each; 3 for 50c. Prepaid.



Flax



Plantain or Day Lily

FUNKIA

(Plantain Lily) — The Plantain Lilies are among the easiest plants to manage; fine for the border even when not in flower. They succeed equally well in sun or shade. 17c each; 3 for 50c. Prepaid.

DAISY SHASTA

ALASKA — A splendid form of the Shasta Daisy. The whole plant is gigantic, but compact and graceful; flowers white, four and five inches across. Very free flowering; small yellow discs. Good for cut flowers. 17c each; 3 for 50c. Prepaid.

DAISY PERSIAN

PYRETHRUM — The pretty, fern-like foliage in the spring, followed by a profusion of handsome blooms in summer, makes the plant very desirable. Unequaled as cut flowers. Hardy under any conditions. 17c each; 3 for 50c. Prepaid.

PERENNIALS

(CONTINUED)

FOX GLOVE

DIGITALIS GLOXINAE-FLORA—A stately picturesque plant with spikes of bloom 3 to 4 inches in height. Color ranges from rose to deep purple. 17c each; 3 for 50c. Prepaid.

CONE FLOWER

PURPUREA—An entirely distinct variety. The flowers are a peculiar formation as well as color, which is reddish purple with large cone-shaped center in brown. 17c each; 3 for 50c. Prepaid.

SATISFACTION GUARANTEED OR YOUR MONEY BACK

Fox Glove

Giant Purple Cone Flower

GAILLARDIA

BLANKET FLOWER GRANDIFLORA—Probably one of the most universal flowers planted among the hardy perennials. Conspicuous for their profusion of bloom. Flowers intense blood-crimson, margined with golden yellow, grows eighteen to twenty-four inches. 17c each; 3 for 50c. Prepaid.



Gaillardia



Golden Glow



Hardy Hibiscus

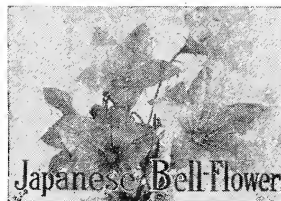
HIBISCUS

Tall growing, especially adapted to backgrounds and shrubby borders. Of easiest culture, and bloom the entire season. 17c each; 3 for 50c. Prepaid.

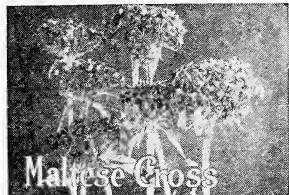
WHITE CRIMSON EYE—This is probably the best known and most planted of the Hibiscus.

RUDEBECKIA

LACINIATA GOLDEN GLOW (T)—August and September Large, double golden yellow, Dahlia-like flowers. 17c each; 3 for 25c each; \$2.50 per dozen. Prepaid.



Japanese Bell Flower



Maltese Cross

LYCHNIS

CHALCEDONICA (Maltese Cross)—Heart-lobed stars of brightest vermilion, arranged in large flat panicles. 2 year, 17c each; 3 for 50c. Prepaid.

EVERYTHING ON THIS PAGE PREPAID

JAPANESE BELL FLOWER

PLATYCODON—A valuable perennial forming a dense branching bush of upright habit. One to two feet with neat foliage. It blooms from July to frost. Large bell-shaped, deep blue flowers. 17c each; 3 for 50c. Prepaid.

HELIANTHUS

MISS MELLISH—An improved variety of Helianthus, profuse bloomer and supplies an enormous quantity of cut-flowers. Yellow. 17c each; 3 for 50c.



Hardy Sunflower



Lupinus

LUPINUS OR LUPINS

The Lupinus produce beautiful long spikes of pear-shaped flowers a foot long on stems 3 feet high. They are perfectly hardy and very showy. We can supply them in the following colors: white, blue, rose, mixed. 17c each; 3 for 50c. Prepaid.

WRITE OUR LANDSCAPE DEPARTMENT FOR ADVICE.

MOURNING BRIDE

SCABIOSA CAUCASICA—Handsome border plants and should be planted in every garden. Lavender blue flowers from July to September that last a long time when cut and put in water. 17c each; 3 for 50c. Prepaid.



Mourning Bride

HOLLYHOCKS

DOUBLE—Immense double and semi-double flowers; all shades and colors mixed. 17c each; 3 for 50c. Prepaid.

LILY OF THE VALLEY

Very small and sweet and dainty, the creamy white scalloped bells pendant along slender stems. They make up (with their broad shiny leaves) into dainty bouquets of fragrance. They spread actively from the roots and soon reclaim shaded cold ground which otherwise would be cheerless and barren. 17c each; 3 for 50c. Prepaid.



Hollyhock

LOBELIA

CARDINAL FLOWER—Rich fiery red flowers strong plants often producing 10 to 18 spikes in August and September. 17c each; 3 for 50c. Prepaid.

PERENNIALS

(CONTINUED)



Oswego Tea

OSWEGO TEA

MONARDA DIDYMA—A bushy plant growing about 2 feet high, covered with round heads of deep red flowers. Its petals are similar to the Cactus Dahlias, also known as Bergamot and Mint on account of the delicious fragrance of their leaves when crushed. 17c each; \$1.75 per dozen. Prepaid.

LIATRIS

(Blazing Star)—It is beautiful as well as odd. It blooms in midsummer and throws up long, narrow spikes of rich purple flowers, which last a long time. A peculiarity of this plant is its great attraction for butterflies. 22c each; 3 for 60c. Prepaid.



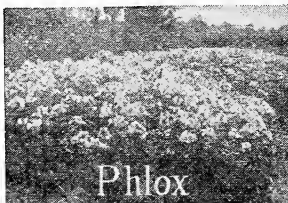
Liatris

SWEET WILLIAM

DIANTHUS BARBATUS—The old-fashioned favorite. A fine plant, producing great masses of bloom of extremely rich and varied colors. Flowers lasting and fine for cutting. 17c each; \$1.75 per dozen. Prepaid.

Dianthus, Pink Beauty. 17c each; \$1.75 per dozen. Prepaid.

Dianthus, Scarlet Beauty. 17c each; \$1.75 per dozen. Prepaid.



Phlox

PHLOX

FINE NEW VARIETIES

KARL FOERSTNER—A lovely orange scarlet. 25c each; \$2.50 per dozen. Prepaid.

MURIEL ROGERS—Deep shiny pink. 25c each; \$2.50 per dozen. Prepaid.

DR. KONIGSHAFER—Brilliant orange scarlet. 25c each; \$2.50 per dozen. Prepaid.

ETHEL PRITCHARD—Beautiful mauve lilac. 25c each; \$2.50 per dozen. Prepaid.

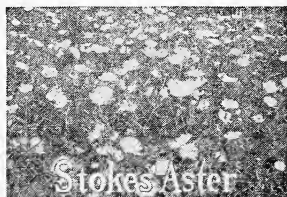
VON HEEKEREN—Salmon rose color. 25c each; \$2.50 per dozen. Prepaid.

RHINELANDER—Beautiful salmon-pink; immense size. 17c each; \$1.75 per dozen. Prepaid.

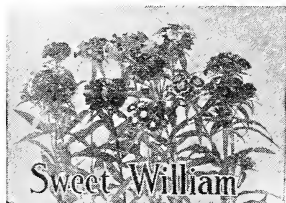
RYNSTROOM—Big trusses, rosy-pink flowers. 20c each; \$2.00 per dozen. Prepaid.

STOKES ASTER

The plant grows from 18 to 24 inches high, bearing freely from early June until late in October, its handsome lavender-blue centaurea-like blossoms, which measure from 4 to 5 inches across. It is of the easiest culture, succeeding in any open, sunny position. 22c each; 3 for 60c. Prepaid.



Stokes Aster



Sweet William



Rocky Mountain Sage

ROCKY MOUNTAIN SAGE

SALVIA AZUREA—A species from the Rocky Mountains, which produces during August and September pretty sky-blue flowers in the greatest profusion. They have been admired very much by the many visitors to our nurseries this summer. 17c each; \$1.75 dozen. Prepaid.

SEDUM

STONECROP—A very pretty erect growing perennial attaining a height of 18 inches. It has broad light green foliage with immense heads of handsome showy rose colored flowers. Indispensable as a fall blooming plant. 17c each; \$1.75 per dozen. Prepaid.



Sedum

TUNICA

SAXIFRAGA — A pretty tufted plant with light pink flowers produced all summer. Useful for rockeries or as a border plant. 17c each; \$1.75 dozen. Prepaid.



Saxifraga



Yellow Day Lily

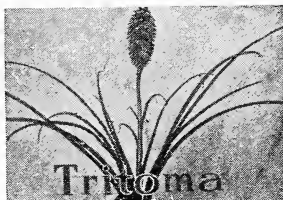
HEMEROCALLIS

YELLOW DAY LILY—Popular hardy plants; belong to the Lily family. They succeed everywhere and should always be included in the border of old-fashioned hardy plants. 17c each; \$1.75 dozen. Prepaid.

SATISFACTION
GUARANTEED

TRITOMA

The Tritoma is sometimes called Red Hot Poker or Torch Flower. It will bloom the first season from seed, sending up tall flower stems on which are borne the great blossoms of a bright red or flame color. Single plants produce from five to a dozen of these great flowers, stalks presenting a brilliant appearance. Protect in winter with rough mulch and will bloom early. 17c ea.; \$1.75 per doz. Prepaid.



Tritoma

VERONICA

SPICATA—Blue flowers are always sought after among perennial plants and there are comparatively few of them. It forms a compact bush about 2 feet high, which is studded with spikes of flowers about a foot long, from July to October. A clump of Veronica in the border is always effective. 17c each; \$1.75 per dozen. Prepaid.

HEDGE PLANTS

BEAUTIFY WITH HEDGES

Do you want to enclose your home grounds with a fence that will add beauty and attractiveness to the surroundings, and will never rot down, nor rust out; but will become more beautiful and substantial each year? Many plants or shrubs may be used with happy results and pleasing effects in making a hedge fence, but the varieties we are listing below are far superior to any others and will answer all the requirements demanded of them.

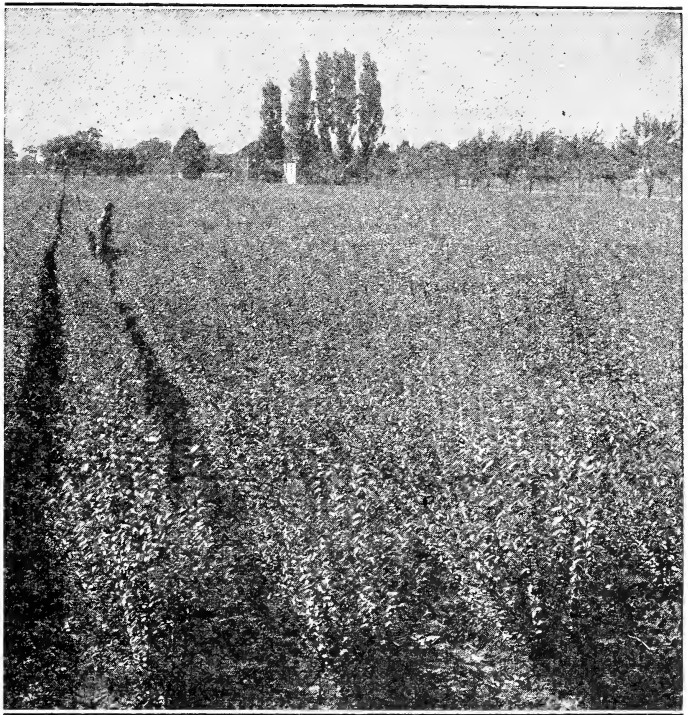
CALIFORNIA PRIVET

Plant either in fall or spring. It is the most beautiful and ornamental of all the hedges. Extremely thrifty and will stand severe pruning. 2-year plants, 12 to 18 inches, \$5.00 per 100; 18 to 24 inches, \$7.50 per 100; 2 to 3 feet, \$8.50. Shipped by Express. Not prepaid.

IBOLIUM

THE NEW PRIVET

For severe climates Ibolium privet is the coming hedge plant. For Northern New York, Michigan, Wisconsin, Northern Illinois, Iowa, Nebraska, Southern South Dakota and Minnesota this will be the hedge plant of the future. It is hardy as the hardiest privet and has all the characteristics of the famous California privet. It holds its leaves till late in the winter, presents at all times a rich green appearance and is a quick grower. 12 to 18 inches, \$6.00 per 100; 18 Shipped by Express. Not prepaid.



A Field of California Privet

AM OCR RIVER PRIVET

Very hardy, quick growth, easily trained to a dense Hedge. 12-18" at \$5.50 per 100. 2 ft. at \$8.50 per 100 by express. Not prepaid.

JAPAN BARBERRY

This is the Barberry that is accepted and allowed to be planted by the government. Makes a beautiful, low, dense hedge with very little trimming and care. Plants 12-18" 25 for \$4.00, 50 for \$7.50 and 100 for \$14.00. Shipped by express. Not prepaid.



HARDY VINES

FALSE BITTERSWEET

(*Celastrus scandens*)—Hardy ornamental vine. Very effective with their bright colored fruit remaining all winter. They are valuable for covering trellis work, trees or rocks and walls. They grow in almost any soil and situation. Fruit is about one-half-inch in diameter, orange-yellow, with crimson seed. 40c each; 3 for \$1.00. Prepaid.

CLEMATIS PANICULATA

This Clematis is by far the most popular of all the species in the American gardens. It is extremely showy when covered with the small, white, fragrant flowers which appear late in the season. 2-year-old, No. 1 plants, 55c each; 3 for \$1.50. Prepaid.

HONEYSUCKLE

(*Lonicera*)

JAPONICA (Var. *Halliana*)—Leaves remain on during winter. Flowers white, turning to yellow. 30c each; 6 for \$1.50; \$20.00 per 100. Prepaid.

CHINESE WISTERIA

This is one of the best and commonest of hardy climbers. Pale green pinnate leaves and bears profusely dense, drooping clusters of purplish, pea-shaped flowers. It blooms in May and often in August or September. 3-year-old, large, healthy plants that will grow, 75c each; 2 for \$1.35. Prepaid.



Clematis Paniculata



SHRUBS

ALMOND—Prunus

DOUBLE FLOWERING ALMOND—Pink and white varieties. Hardy as far north as Ontario. 2 to 3 feet, 80c each; 2 for \$1.40. Prepaid.

PURPLE LEAVED PLUM (*Cerasifera*, var. *Pissardi*)—One of the best of all purple-leaved trees, holding much of its color in the American summers. It seems to be hardy wherever the common plum is grown. 3 to 4 feet, \$1.00 each. Prepaid.

ALTHEA—Rose of Sharon

(*Hibiscus Syriacus*)

One of the old reliable shrubs. Effective when planted as a hedge.

JEANNE D'ARC—Double, white.

RUBIS—Single red.

TOTUS ALBUS—A single white.

AULISSIMA—Purple. Shrub form.

BOULE DE FEU—Double red. Shrub form.

MONSTROUS—Double, red.

2 to 3 feet, 40c each; 3 for \$1.10. Prepaid.

BARBERRY—Berberis

JAPANESE (*Thunbergi*)—Of all the Barberries in cultivation this one is probably the best known and most planted. Grows low and dense, making it very adaptable for planting along walks and borders where a rank-growing shrub would be offensive. Every driveway can be beautified greatly by planting Barberry and we do not hesitate to recommend it. 12 to 18 inches, 27c each; 18 to 24 inches, 40c each; 3 for \$1.10. Prepaid.

FOR NEW RED-LEAVED BARBERRY
(See back cover).

Butterfly Bush—Buddleia

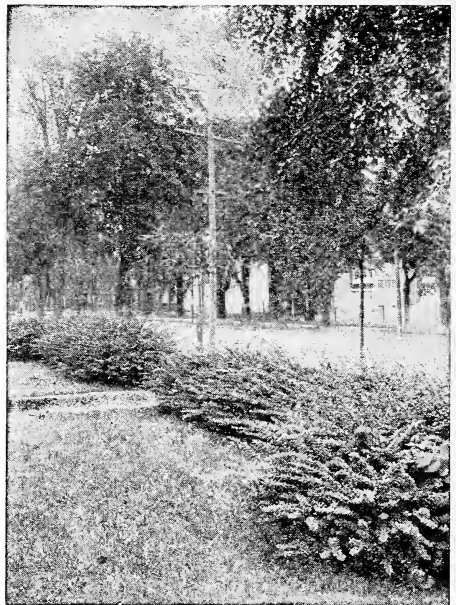
SUMMER LILAC (*Variabilis magnifica*)—This shrub of comparatively recent introduction has grown into favor almost immediately. It is a semi-herbaceous plant by which we mean in some latitudes it will die down to the ground, and while perfectly hardy, we recommend covering the roots with manure, leaves or other material as winter approaches, as it will help to produce a heavy growth the next season. It is very hardy; blooms the first season, usually from June until frost; the blossoms are borne on long, graceful stems, which terminate in tapering panicles of lilac colored flowers that are of miniature size; the flower head is frequently ten inches long. 40c each; 3 for \$1.00. Prepaid.

Sweet Pepper Bush—Clethra

ALNIFOLIA—A native shrub 3 to 4 feet tall, bearing profusely spikes of yellowish white, scented flowers in August. 18 to 24 inches, 55c each; 3 for \$1.50. Prepaid.



ROSE OF SHARON



Japanese Barberry

CYDONIA—Fire Bush

JAPAN (*Japonica*)—Common garden form, growing from 3 to 6 feet with spreading, spiny branches. The scarlet-red flowers appear before the leaves and are followed by globular fruits from one and one-half to two inches high. 18 to 24 inches, 55c each; 3 for \$1.50. Prepaid.

FLOWERING LOCUST

ACACIA

HISPIDA—This shrub is valued for its elegant clusters of rose colored flowers, which expand toward the last of May and continue for some time. The branches resemble the Moss Rose. Beautiful for planting in masses, 18 to 24 inches, 55c each; 3 for \$1.50. Prepaid.

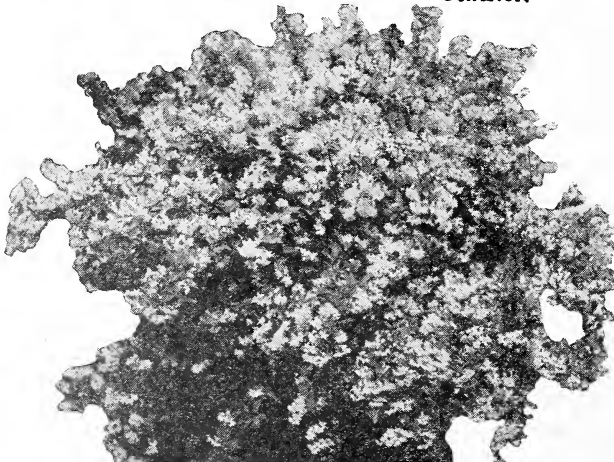
DEUTZIA

An elegant species of strong, erect-growing shrubs. Especially prized for the beautiful clusters of blossoms in May.

PRIDE OF ROCHESTER—Showy, early, large-flowering sort; blossoms in May before others. Grows 6 to 8 feet high. White flowers, large and double. One of the best of the Deutzias. 2 to 3 feet, 40c each; 3 for \$1.20. Prepaid.

LEMOINEI—Spreading shrub to three feet in height. Its pure white flowers appear in broad panicles. A very desirable shrub, more vigorous and with more showy flowers than some of the other forms. Excellent for forcing. Very hardy. 18 to 24 inches, 55c each; 3 for \$1.50. Prepaid.

GRACILIS—A handsome dwarf, and bushy little shrub with slender often arching branches. A neat shrub that blooms in May, clothing its branches in pure white flowers. Valuable for shrubberies or for forcing. 12 to 18 inches, 55c each; 3 for \$1.50. Prepaid.



Deutzia Pride of Rochester

SHRUBS (CONTINUED)

GOLDEN BELL—Forsythia

FORTUNE'S—Grows with upright or arching branches. 18 to 24 inches, 35c each; 3 to 4 feet, 45c each; 3 for \$1.20.

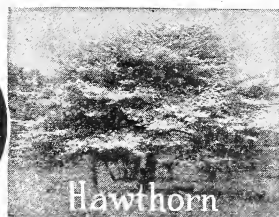
WEeping (Suspensa)—5 feet. Branches often drooping on ground and taking root. 2 to 3 feet, 40c each; 3 to 4 feet, 45c each; 3 for \$1.20. Prepaid.

HYDRANGEAS

ARBORESCENS (Var. Sterilis), (Hills of Snow)—Almost all of the flowers are sterile. Very showy variety, excellent for borders. 18 to 24 inches; 50c; 2 to 3 feet, 75c each; 2 for \$1.40. Prepaid.

TREE HYDRANGEA—Flowers similar to the Hydrangea Paniculata Grandiflora, only they are grafted to form a tree. 3 to 4 feet, \$1.50; 2 for \$2.75. Prepaid.

PANICULATA GRANDIFLORA—This is the best known form of the hydrangea. A hardy, ornamental shrub 14 to 15 feet with dense, globose head. The large, pinkish, white flowers appear in August and September. The sterile flowers changing later to purplish. 18 to 24 inches, 50c each; 2 to 3 feet, 75c each; 2 for \$1.40. Prepaid.



Hawthorn

Hawthorns



HYDRANGEA

KERRIA

JAPANESE ROSE—One of the first shrubs brought from Japan. It grows from four to eight feet high and as broad as high. Very attractive throughout the year; in winter the light green branches, in early June when the yellow flowers appear in great abundance; and again in autumn when the leaves have changed to a clear yellow. Not quite hardy in the northern states. 2 to 3 ft., 55c; 3 for \$1.50. Prepaid.

RHODOTYPHUS KERROIDES

(JET BEAD)

Sometimes called the White Kerria. A very ornamental, deciduous much-branched shrub, usually from three to seven feet, handsome and distinct, and is hardy as far north as Massachusetts. Has bright green foliage. Made very conspicuous by its white flowers in May or June and black fruits in the fall. 2 to 3 feet, 55c each; 3 for \$1.50. Prepaid.



Hydrangea Hills of Snow

LILAC—Syringa

Lilacs are among the most popular and ornamental of the flowering shrubs.

PERSIAN LILAC—A very hardy sort, native of Persia. Bright purple flowers. 2 to 3 feet, 75c each; 3 for \$2.00. Prepaid.

COMMON (Syringa Vulgaris)—The old favorite, and one of the best. 60c each. Prepaid.

COMMON WHITE (S. Vulgaris Alba)—Flowers white, fragrant, beautiful. 60c each; 3 for \$1.50. Prepaid.

CHARLES X—A strong, rapid growing variety, with large, shining leaves. Trusses rather loose; large, reddish purple. \$1.00 each; 2 for \$1.75. Prepaid.

JAPONICA—An elegant Japanese species, eventually forming a good sized tree, flowers creamy-white in great panicles a month later than other sorts. \$1.00 each; 2 for \$1.75. Prepaid.

JOSIKAEA (Hungarian Lilac)—A distinct species of stout erect growth with dark shining leaves and purple flowers which are produced later in June. \$1.00 each; 2 for \$1.75. Prepaid.

MME. MARIE LEMOINE—The finest double white Lilac yet introduced. The individual flowers, which resemble miniature Tuberoses, as well as the truss, are of immense size, deliciously scented; fine for cutting. \$1.00 each; 2 for \$1.75. Prepaid.

PRESIDENT GREVY—Magnificent panicles of large double lilac flowers. \$1.00 each; 2 for \$1.75. Prepaid.

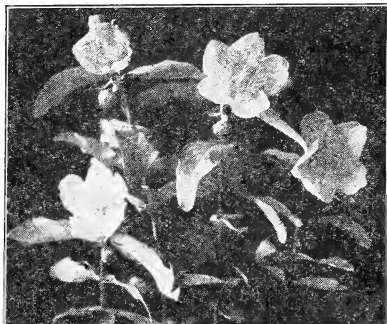
HAWTHORNS

PAULS SCARLET THORN (Crataegus Oxyantha Splendens)—Flowers deep crimson scarlet, very double. This is one of the most attractive trees for specimen planting or groups, as showy in fruit as when in flower. 4 to 5 ft., \$2.50. Prepaid.

HYPERICUM ST. JOHN'S WORT

Shrubs and herbs, with mostly yellow flowers. The form is compact and rounded with somewhat persistent leaves.

H. MOSERIANUM—A novelty of decided merit on account of its large, glistening golden yellow flowers, produced freely from mid-summer until hard frost. It is quite dwarf in habit. 12 to 18 inches, 55c; 3 for \$1.50. Prepaid.



Hypericum



SHRUBS

(CONTINUED)

PHILADELPHUS— Mock Orange

GRANDIFLORUS—Large, flowering shrub, growing to about 8 feet with spreading branches. 18 to 24 inches, 30c each; 2 to 3 feet, 45c each; 3 for \$1.20. Prepaid.

NORMA—The best all season foliage of them all. Flowers equal to Virginal and blooms in the spring. 2 to 3 feet, 40c each; 3 for \$1.10. Prepaid.

CORONARIUS—Deliciously fragrant. 18 to 24 inches, 35c each; 3 to 4 feet, 45c each; 3 for \$1.10. Prepaid.

BOUQUET BLANC—A real white bouquet of immense size. We can only urge you to include it with your order; we know you will not be disappointed, because it has no equal anywhere. The time, experience and patience to produce such wonderful plants as these can only be realized by those who have worked with them. 18 to 24 inches, 60c; 2 to 3 feet, 80c each; 2 for \$1.50. Prepaid.

PHILADELPHUS VIRGINAL

BLOOMS THROUGHOUT THE SEASON

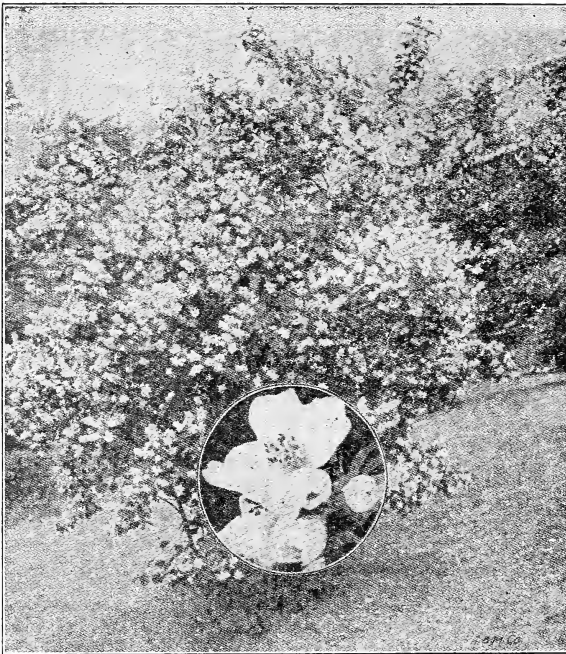
This is a new and wonderful addition to the Mock Orange family but is far beyond anything in this line that has been brought out in the past. It is without question one of the most beautiful shrubs grown and once it becomes known will be planted on every home ground. Because of its being new the supply of this variety is scarce and high priced, but we are going to offer these at the following low prices as long as our supply of this shrub lasts. 18 to 24 inches, 65c each; 3 for \$1.75. Large, 2 to 3 feet plants, 85c each; 3 for \$2.40. Prepaid.



FRENCH PUSSY WILLOW

(SALIX CAPRAE)

Plant one or more of them this fall. Cut the ends of the branches in January or February. Place them indoors in a vase of water. Watch them unfold their large catkins of silvery pink, from 1 to 2 inches long. They will repay you many times their cost in pleasure. 60c each; 3 for \$1.25; 6 for \$2.00. Size of plants 3 to 4 feet. Prepaid.



Mock Orange

SNOWBERRY

WHITE SNOWBERRY—The rose colored flowers appear in loose, often leafy racemes in July and August. White, waxy berries until late fall. 18 to 24 inches, 30 each; 2 to 3 feet, 55c each; 3 for \$1.50. Prepaid.

RED SNOWBERRY (Coralberry)—Compact bush. 2 to 3 feet, 40c each; 3 for \$1.10. Prepaid.

SPIREA—The Most Popular Shrub

There is no more dependable shrub than Spirea. Its graceful foliage and growth and the beautiful blossoms are a delight the season through. A selection of varieties, planted in masses or rows will assure continuous bloom to the end of summer. The early fall frosts touch the leaves with scarlet.

VAN HOUTTEI—One of the most beautiful or perhaps the most beautiful of early Spireas. Covered with white flowers in May. 18 to 24 inches, 30 each; 2 to 3 feet, 45c each; 3 to 4 feet, 55c each; 3 for \$1.50. Prepaid.

BILLARDI—A shrub that grows to 6 feet in height with oblong leaves. Flowers are bright pink. 2 to 3 feet, 45c each; 3 for \$1.10. Prepaid.

ANTHONY WATERER—A very free-flowering, compact, dwarf shrub, with bright crimson flowers in dense corymbs. 12 to 18 inches, 60 each; 3 for \$1.40. Prepaid.

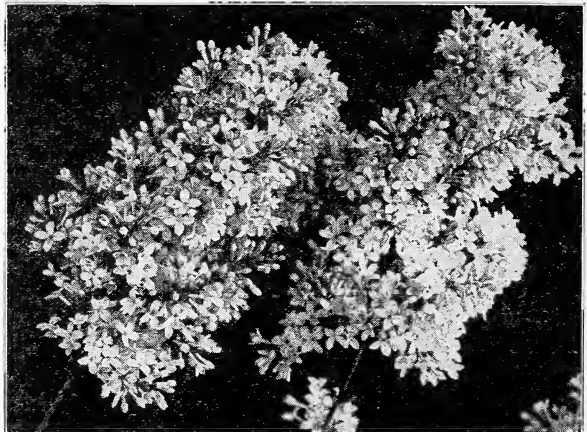
SPIREA THUNBERGI (Snow Garland) (F)—2½ to 3 feet. White. April. The extra early flowering species is the pride of the Southland. It is spreading in growth with arching slender branches that are a perfect mass of minute flowers followed with exceptionally delicate green foliage. For edging purposes it has few equals and we recommend it highly. 18 to 24 inches, 65c each; 3 for \$1.50. Prepaid.

TAMARIX

These plants are very beautiful all the year, in winter for their coloring of the bark and in summer for the light green, feathery foliage and large, loose panicles of purplish flowers.

AFRICANA—An upright grower. Blooms in May. 2 to 3 feet, 40c each; 3 for \$1.10.

HISPIDA—A graceful shrub, upright branches, flowers pink, appearing in August. 2 to 3 feet, 55c each; 3 for \$1.50. Prepaid.



Lilacs



SHRUBS

(CONTINUED)

SNOWBALL—Viburnum

ARROW WOOD (*Dentatum*) — A gorgeous upright, native shrub, thriving best in moist soil. It is especially hardy, doing well from New Brunswick to Minnesota. It blooms in May or June, followed by black fruit. 2 to 3 feet, 55c each; 3 for \$1.50. Prepaid.

COMMON (Var. *Sterilis*)—This is the well known, common snowball of the old-fashioned gardens. Besides the snow-white flowers in May, the foliage is decorative and assumes a bright color in fall. 2 to 3 feet, 55c each; 3 for \$1.50. Prepaid.

HIGH BUSH CRANBERRY (*Opulus*)—Handsome native shrub attaining twelve feet with rather smooth light branches and stems. The pure white flowers appear in May and June, followed by decorative fruits, which begin to color by the end of July and remain on the branches and keep their bright scarlet color until the following spring. The berries are not eaten by birds. 18 to 24 inches; 45c; 2 to 3 feet, 65c each; 3 for \$1.70. Prepaid.

JAPANESE (*Tomentosum*, var. *Plicatum*)—One of the choicest shrubs. Foliage is abundant during the summer and fall, and its balls of pure white are borne in great profusion. Fine for specimen planting. 18 to 24 inches, 65c; 2 to 3 feet, \$1.00. Prepaid.



Snowball

SPINDLE TREE—Euonymus

BURNING BUSH (*Corky Bark*) (*Alatus*)—An attractive ornamental shrub seven to eight feet. The flowers appear in May and June. In autumn the foliage changes to a fine rose color. 2 to 3 feet, \$1.00 each; 2 for \$1.75. Prepaid.

EUROPEA—A large shrub to fifteen feet. Covered in the spring with bright yellow leaves, color a beautiful crimson scarlet in fall; stems almost a dark green. 4 to 5 feet, 75c each; 2 for \$1.40. Prepaid.

STRAWBERRY BUSH (*Americana*)—An ornamental, upright shrub to eight feet. The flowers appear in June, are yellowish or reddish green, followed by pink fruits which are very attractive. 4 to 5 feet, 75c each; 2 for \$1.40. Prepaid.

WEIGELA—Diervilla

An ornamental and popular class of graceful shrubs. The beautiful trumpet-shaped flowers appear in May and June in such profusion as to almost completely hide the foliage. Is very desirable for the border and for grouping. They vary in color from pure white to dark red. The following are choice varieties:

ROSEA—A choice, vigorous sort, which yields an immense crop of deep pink, trumpet-like flowers in June, and bears a scattering of blossoms through the rest of the season. 18 to 24 inches, 35c each; 2 to 3 feet, 55c each; 3 for \$1.50. Prepaid.

EVA RATHKE—The flowers are a deep carmine-red, erect growing. A most profuse bloomer in spring and again in autumn. 18 to 24 inches, 55c each; 2 to 3 feet, 75c each. Prepaid.



SPIREA WATERER



NEW DWARF SNOWBALL

VIBURNUM OPULUS NANA—A dwarf form of High Bush Cranberry and a member of the Snowball family. It grows very dense, globular in form. Has large glossy green leaves terminating brilliant bronze in the autumn. Grows from 18 to 24 inches high. Needs no trimming. 8 to 12 inches, 75c each; 3 for \$2.00. Prepaid.

SPRINGHILL NURSERIES, Tippecanoe City, Ohio.

Dear Sirs:

I thought you might be interested to know that we received the parcel of goods, purchased from you, last evening in perfect condition and wish to thank you for such splendid service.

All the roses and other plants were fresh and strong, also the bulbs are the best received of one hundred lily bulbs purchased this year.

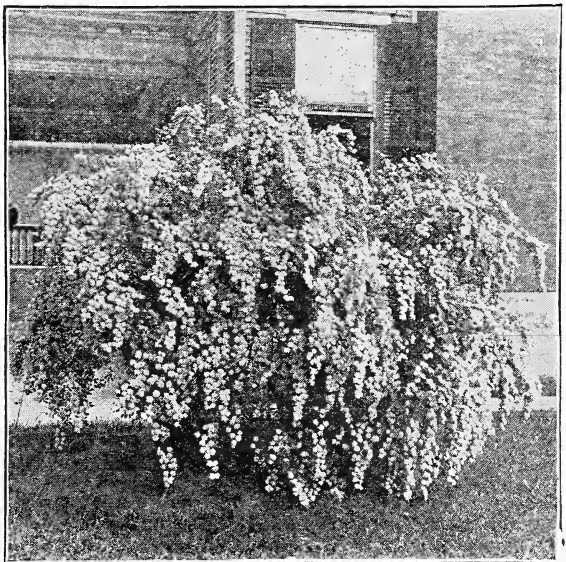
I have them all planted and feel every one will thrive.

Very truly yours, M. R. Davis,
Kingston, Ontario, Canada.

WRITE OUR LANDSCAPE DEPARTMENT FOR ADVICE ON PLANTING YOUR GROUNDS.

WITCH HAZEL—Hamamelis

VIRGINIA—Hardy ornamental shrub or small tree with deciduous alternate leaves. Petals of flowers are bright yellow, appearing from September to November. Thrives best in moist location. Valuable on account of blooming at a time when hardly any other shrub outdoors is in flower. 2 to 3 feet, 55c each; 3 for \$1.50. Prepaid.



Spirea Van Houttei. See Page 14.



A Fence Planted to Dorothy Perkins

CLIMBING ROSES

2Yr. Old **FIELD GROWN**

So many uses can be found for Climbing Roses that we have selected the best varieties and listed them below. A Rose hedge or fence may be wanted, or a variety to use on a trellis, for roadside planting or in banks. We will make specially attractive prices on these varieties in 1000 lots for roadside planting.

A M E R I C A N P I L L A R—A single flowering variety of great beauty. The flowers are of enormous size, three to four inches across, of a lovely shade of apple-blossom pink, with a clear white eye and clusters of yellow stamens. These flowers are borne in immense bunches, and a large plant in full bloom is a sight not easily forgotten.

CLIMBING ORLEANS—Bright red with light center; blooms in gigantic clusters on vigorous canes. Practically ever-blooming.

CHRISTINE WRIGHT—The flowers are double, three and one-half to four inches in diameter, borne singly and in clusters of perfect form, beautifully in the bud, and in the fully expanded flower; in color a most refreshing bright wild-rose pink.

CRIMSON RAMBLER—Will attain a height of 10 to 20 feet in a season; produces a marvelous profusion of rich and glowing crimson clusters during June and July. It is the supreme novelty among climbers and the forerunner of the splendid array of "Rambles" now embraced in this class.

CLIMBING AMERICAN BEAUTY—The famous American Beauty Rose in climbing form. Has all the characteristics of its relative, including form and fragrance. Healthy foliage and has strong climbing habit of growth; the abundant bloom being in prime before the June show of the bush type. The demand for this type has increased so rapidly it is hard to keep up in its propagation.

DOCTOR VAN FLEET—One of the newest type of climbers and very hardy. Flowers when open run four inches or more in diameter in which it compares with the Tea class. Center built high, petals undulated and cupped. Color is a remarkably delicate shade of flesh-pink. Admirable cutting variety with stems 12 to 18 inches long.

DOROTHY PERKINS—A most beautiful shell pink. The flowers are borne in large clusters of small double bloom and very sweet scented. Foliage smoother and darker than the Crimson Rambler. This is undoubtedly the thriftiest, showiest and most practical of the older pink rambles and trails its ribbons over more verandas, windows and trellises than any other variety.

EXCELSA

A sensational new hardy climbing Rose, sometimes called "Red Dorothy Perkins." Best described as an improved Crimson Rambler with heavy glossy, varnish like foliage, without any of the defects of the Crimson Rambler, which is very unsightly at times because of mildew on the foliage. This great new Rose is nearly evergreen and is absolutely hardy. The flowers are very double, produced in immense trusses of thirty to forty flowers to each truss. Color intense crimson—new and distinct. One of the great hardy climbing Roses. Hardy as an oak. Lasts a lifetime. A gorgeous sight when in bloom.

FLOWER OF FAIRFIELD (The New Everblooming Scarlet Rambler)—Flower of Fairfield commences flowering in the spring or early summer and produces repeatedly crops of bloom until late in the autumn. It blooms very profusely on young wood the first year after planting. Very effective for covering walls, trellises or arches, and is equally attractive for table decoration or other uses as cut flowers.

GARDENIA—Bright yellow, cream color when open; very fragrant and free; early flowering. This is the hardy Marechal Niel; double yellow flowering.

MARY WALLACE

A GREAT BREEDER'S LEGACY

This is Dr. Van Fleet's masterpiece. The trade is slow in taking hold of this charming pillar rose. Hardy as far north a Central Ohio. Blooms two or three times during the summer months. A pillar rose supporting itself in a bushy growth 6 to 8 feet high. Bright clear rose-pink with salmon at base of petals. The largest Hybrid Wichuriana in existence.

PAUL'S SCARLET CLIMBER—A wonderful Rose for trellis or pergola. Winner of Gold Medal as best new climbing rose at National Rose Society's Exhibition. Flowers are scarlet, shaded crimson. Corresponds to the Climbing American Beauty and Dr. Van Fleet as to size, shape and habit. Blooms very long, holding flower after many June bloomers have dropped their petals.

YELLOW RAMBLER—Flowers deep golden yellow. Very fragrant.



American Pillar



EXCELSA



GARDENIA

PRICE OF ALL ROSES ON THIS PAGE 45c each; 6 for \$2.50; 12 for \$4.50; 2-year-old plants field-grown. Postpaid.

AMERICAN
BEAUTY



ROSES THE LOVELIEST FLOWER OF ALL FOR NOVEMBER DELIVERY



For November Delivery Roses do not mature till late in the season and therefore should not be transplanted until a late date. Your order for roses will be shipped when the plants are in good shape to move and if you will mulch them with manure or litter they will bloom very early for you next year.

EVERBLOOMING ROSES—Tea Roses

STRONG 2-YEAR-OLD FIELD-GROWN PLANTS WILL BLOOM FIRST YEAR ANY VARIETY 60c EACH; 3 FOR \$1.75; 6 FOR \$3.25. PREPAID.

COLUMBIA (H. T.)—It is a big Rose. The color is a true pink, about the shade of a perfect Shawyer, deepening as it opens to glowing pink.

ETOILE DE LYON—Bright sulphur-yellow; fine form, large size; a fine yellow Rose.

ETOILE DE FRANCE (H. T.)—Color a lovely shade of clear, red-crimson velvet.

LADY HILLINGDON—Buds of remarkable quality and elegance, of good size opening into handsome flowers of clear apricot-yellow. Plant relatively hardy, of much vigor, and with an autumn-blooming habit.

OPHELIA—Salmon-flesh, shaded with rose, large, and of perfect shape; of excellent habit, the flowers standing up well on long, stiff stems and produced in great profusion. Excellent for forcing and a fine decorative variety.

PINK KILLARNEY—This, the original introduction, is a beautiful Hybrid Tea Bush Rose; strong, sturdy and upright, with fine, heavy, insect-proof foliage, bearing flowers that are simply exquisite in form and color, the bud is exceedingly long and the flowers immense in size; color deep, brilliant, sparkling shell-pink; hardy everywhere. The bush is magnificent in growth, good size and bears its beautiful burden of flowers all summer.

GRUSS AN TEPLITZ—The sweetest, richest crimson hybrid Tea Rose. Called by some growers Virginia R. Cox. The intense, dazzling color of this rose is found in no other variety. Fiery crimson, shaded with a dark, velvety sheen, totally unlike any other color in the world. Large, handsome, moderately double flowers. Produced in wonderful profusion throughout the whole growing season; in fact, it is always in bloom. The flowers are produced singly, sometimes in clusters, producing a gorgeous effect on the lawn or in the garden all summer through. Vigorous grower, actually attaining a height of 4 to 5 feet, perfectly hardy everywhere. Incomparable for fragrance.

RADIANCE—The color is a splendid even shade of clear red, without a trace of any other color, retaining its vividness for an unusually long time after being cut. It is a remarkable bloomer, being constantly in flower from early spring until freezing weather. Strong, vigorous branching, grower, each branch terminating in a large, bold, double bloom. One of the best hardy outdoor garden roses known. Originated by John Coon, the famous American Rosarian.

RED RADIANCE (H. T.)—An even better Rose than its parent, Radiance in habit, bearing big, globular flowers of deep rose-red on strong, individual canes which are freely produced all summer until frost.

RED COLUMBIA (H. T.)—A brilliant scarlet-crimson of exquisite shade, a sport from Columbia; semi-double, one of the freest bloomers in existence; produces beautiful foliage in profusion.

RICHMOND—Pure rich scarlet; very free and continuous flowering; splendid forcer.

SUNBURST—The color is orange-copper or golden-orange and golden yellow edge of petals lighter; all intense shades, extremely brilliant in effect. Some call the color cadmium-yellow. It is the yellowest of all Roses in the everblooming class.

JUNE ROSES—Hybrid Perpetuals

**ANY VARIETY 70c EACH; 3 FOR \$2.00 6 FOR \$3.50. PREPAID
LARGE TWO-YEAR-OLD FIELD-GROWN BLOOMS FIRST YEAR**

AMERICAN BEAUTY—The well-known red forcing Rose. Excellent.
GENERAL JACQUEMINOT—Crimson-scarlet; large, full. Very fragrant.

KAISERINE A. VICTORIA—Flowers are immense in size and produced with great freedom. The color is a true paper white.

MAGNA CHARTA—Bright rose, very large and double, good form and fragrant, extra.

MARSHALL P. WILDER—A great many persons will not give up the contention that this is the one plus ultra in red Roses. Deep, rich glowing red.

MRS. JOHN LAING—Color clear bright, shining pink; exquisitely shaded. Awarded gold metal, N. R. S.

PAUL NEYRON—Deep rose; flowers of immense size; indeed many claim this to be the largest Rose grown.

ROSA HUGONIS—A New Bush Rose From China

ROSE HUGONIS—Like many other rare floral gems from the Orient, this variety is spectacular in its exotic beauty. Imagine a many branched shrub, 6 to 8 feet tall, rearing slender sprays in all directions, gracefully arching beneath loads of brilliant yellow. The flowers are borne on the previous season's growth and appear very early in the spring, before the foliage. Later in the season it throws up many new branches (next season's flowering wood) and these branches are of a beautiful deep red color, which makes the shrub a garden attraction almost throughout the growing season. Strong field-grown plants, each 75c; 3 for \$2.00. Prepaid.



LOW PRICED EVERGREENS

We know that a great many of our customers have hesitated to buy Evergreens in the past because of their high price. We have a quantity of Evergreens that have been in the field 3 years and from now on will make rapid growth. They are nice bushy plants and are a wonderful bargain at the extremely low prices quoted.

PYRAMIDAL ARBORVITAE

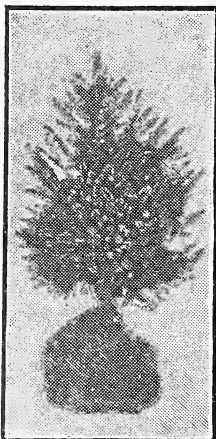
It forms a tall slender column, densely branched, with dark green foliage. Very graceful tree and price, 3-year-old, 10-15 inch, 45c each; 3 for \$1.25, prepaid; 2-3 feet, \$2.50 each, not prepaid.

GLOBE ARBORVITAE

A low growing form of the Arbor Vitae of very dwarf habit. Grows naturally in dwarf shape. Price, 3-year-old, 6-10 inches, 35c each; 3 for \$1.00, prepaid; 12-15 inches, \$1.50 each, not prepaid.

AMERICAN ARBORVITAE

A very good tree for grouping or for formal planting. Very quick grower and can be trimmed to any desired height or shape. Makes fine hedges. Price, 3-year-old, 10-12 in. 35c ea.; 3 for \$1.00, ppd.; 2-3 feet, \$2.00 not ppd.



Norway Spruce



Chinese Arborvitae 10 to 12 in., 30c Scotch Pine 8 to 10 in., 35c Juniper Pfitzeri 6 to 8 in., 35c

CHINESE ARBORVITAE

A pyramidal tree of very compact form. Foliage is bright green and fine for foundation planting. Price, 3-year-old, 10-12 inches, 40c each; 2 for 75c, prepaid; 2-3 feet, \$2.00 each, not prepaid.

GOLDEN CHINESE ARBORVITAE

Conceived to be one of the most beautiful Evergreens that grow. Very dense and compact and of rich golden color. The branches stand out fan-like shaped from the center of the plant and it is extremely interesting. Price, 8-12 inches, 55c each; 2 for \$1.00, prepaid; 18-24 inches, \$3.25 each, not prepaid.

RETINOSPORA PLUMOSA

A blue like Evergreen of a regular habit of growth. Bright shiny green foliage and a wonderful plant. Price, 3-year-old plants, 8-10 inches, 35c; 3 for \$1.00, prepaid; 18-24 inches, \$2.75 each, not prepaid.



Siberian Arborvitae 10 to 12 in., 45c American Arborvitae 10 to 12 in., 35c Blue Spruce 8 to 12 in., \$1.00

BLUE SPRUCE

This is your opportunity to get a fine Blue Spruce on your lawn at low cost. These fine Colorado Spruce are very blue in color and should make very rapid growth. Price, 3-year-old, 8-12 inches, \$1.00 each, prepaid; 18-24 inches, \$8.50 each, not prepaid.

NORWAY SPRUCE

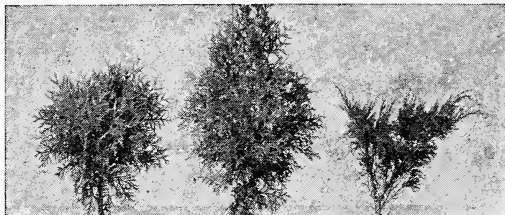
One of the best Evergreens for the lawn. Can be used for out-door Christmas tree and are very easy to grow. Price, 3-year-old plants, 30c each; 3 for 80c, prepaid; 18-24 inches, \$1.25, not prepaid.

AUSTRIAN PINE

This variety is very popular for grouping. Makes a tall nice tree with spreading branches. Very picturesque. Price, 3-year-old, 8-12 inches, 35c each, 3 for \$1.00, prepaid; 2-3 feet, \$2.50 ea., not prepaid.

SCOTCH PINE

It also grows to be a large tree and is pyramidal in shape when young. Price, 3-year-old, 8-10 inches, 35c each; 3 for \$1.00, prepaid; 2-3 feet, \$2.50 each, not prepaid.



Globe Arborvitae 6 to 10 in., 35c Pyramidal Arborvitae 10 to 15 in., 45c Juniper Sabina 8 to 10 in., 40c

JUNIPER PFITZERI

A Chinese type of Juniper which makes a broad Evergreen with horizontally spreading branches. Grows from 4-5 feet high and has plume like branches. Are very pretty do well anywhere. Price, 3-year-old plants, 6-8 inches, 35c each; 3 for \$1.00, prepaid, 18-24 inches, \$3.75 each, not prepaid.

JUNIPER SABINA

A low growing, wide spreading, thickly branched, dark green Evergreen that must be seen to be appreciated. Price, 3-year-old plants, 8-10 inches, 40c each; 2 for 75c, prepaid; 15-18 inches, \$2.50 each, not prepaid.

SIBERIAN ARBORVITAE

Very handsome dark green variety. Grows naturally conical in shape. Good for foundation planting and is a very strong and sturdy grower. Price, 3-year-old, 10-12 inches, 45c; 3 for \$1.25, prepaid; 18-24 inches, \$2.75 each, not prepaid.



Austrian Pine 8 to 12 in., 35c Golden Chinese Arborvitae 8 to 12 in., 55c Retinospora Plumosa 8 to 10 in., 35c

NOTE: The 3-year-old prepaid Evergreens on this page will be shipped to you by parcel post. They will be wrapped in water-proof paper and be strong and with a good root system. They should grow very rapidly. The larger sizes that are not prepaid are dug with a ball of earth and burlaped and must be shipped by express or freight.

Shade and Ornamental TREES



EUROPEAN MOUNTAIN ASH

Trees, with their great height, symmetry and graceful habits are the keynote of the general landscape. Who would be without their shady comfort in the summer time, or fail to feel the deep thrill of opening buds in the spring and the first flutter of the green leaves? Much of the loveliness and charm of autumn would be gone without the gay red and yellow foliage of the shade trees.

ASH—Fraxinus

AMERICAN WHITE (Americana)—A handsome hardy, broad-headed, quick-growing shade tree, sometimes reaching 120 feet in height. Very valuable in landscaping. 6 to 8 feet, 75c each; 8 to 10 feet, \$1.25 each.

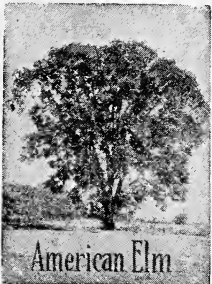
EUROPEAN MOUNTAIN ASH

(*Sorbus aucuparia*)—Ornamental deciduous tree with beautiful foliage, which turns orange-red in the fall. The fruits are showy and often remain all winter, if not eaten by the birds. Not particular as to soil. 6 to 8 feet, \$1.65 each; 2 for \$3.00.

DOGWOOD—Cornus

FLORIDA (White Dogwood)—Handsome tree of medium size, flowering after Redbuds when most other trees are still bare. Great white flowers are three inches across, lasting in favorable weather for several weeks. The bright red bark on its young branches makes it cheery in winter. Blooms when small. 2 to 3 feet, 70c each; 3 to 4 feet, \$1.00 each.

FLORIDA (Var. Rubra)—A beautiful form of the Dogwood with blossoms that are pink on the outside of the petals. 2 to 3 feet, \$3.00 each.



WEeping MOUNTAIN ASH—A beautiful weeping tree, 4 to 6 feet high, branches extending to the ground. Fine for specimen planting. \$3.00 each; 2 for \$5.00.

ELM—Ulmus

Elms are considered the best of all the street trees and are used in greater quantities than probably all other kinds or varieties combined. In planting Elms do not crowd them.

MOLINE—Our new introduction. A beautiful tree for avenue planting. Very large leaves; very compact growth. 8 to 10 feet, \$2.00 each.

AMERICAN (Americana)—Very valuable for park planting, for avenues and as a shade tree for lawns.

One of the most majestic and graceful of our shade trees. Hardy, a rapid grower, resists drought well, and is long lived. 6 to 8 feet, 75c each; 8 to 10 feet, \$1.50 each; 10 to 12 feet, \$2.00 each.

CATALPA BUNGEI

(Umbrella)—Just the tree to be used for formal effects. Propagated on a stem of the *Catalpa Speciosa*. It makes a very unique, ornamental tree. Has a broad, dome-shaped head at the top of a long, straight stem. When the tree attains its full growth, the top is often 15 feet in diameter and not over 3 to 4 feet tall on top of a strong stem from 5 to 7 feet in height. An exceptionally hardy variety. 1-year heads, \$1.50 each; 2-year heads, \$2.60 each.



WRITE FOR QUOTATIONS ON TREES IN QUANTITY LOTS.

MAPLE—Acer

BOX ELDER (Negundo)—Large, spreading tree of rapid growth; very hardy, and a good drought resister. Largely planted for windbreaks and timber. Leaves resemble those of the Ash. 8 to 10 feet, \$1.00 each.

NORWAY (Platanoides)—Large, handsome tree with a compact rounded head of spreading branches, attaining a height of 75 feet. The broad, deep green leaves cast a dense, refreshing shade. One of the best and most beautiful trees for the street, the park, cemetery or lawn planting. 6 to 8 feet, \$1.50 each; 8 to 10 feet, \$2.50 each.

SILVER (Saccharinum)—This is one of the best known of all Maples. It is an ornamental tree with wide, slender, spreading branches. Thrives almost anywhere, but grows very rapidly in moist, rich soil. 6 to 8 feet, 75c each; 8 to 10 feet \$1.00, each.

SUGAR OR ROCK (Saccharum)—Large trees to 120 feet with gray bark. Long lived. Grows well except in damp, soggy soils. An excellent street and shade tree of upright, dense growth. Leaves turning bright yellow and scarlet in autumn. 6 to 8 feet, \$1.50 each; 8 to 10 feet, \$2.25 each.

SCHWEDLERI (Purple-Leaved Norway Maple)—One of the most beautiful of the shade trees. In early spring the young leaves are bright red, changing to purplish green as they grow older. In autumn they are golden yellow. The tree has round, compact and large leaves which cast a dense shade. 6 to 8 feet, \$2.00 each.

WEeping CUT LEAF BIRCH

Birches not only form an interesting class of trees, but they are also beautiful and ornamental. They are especially desirable for park and other ornamental planting. The bark usually separates into thin, papery leaves. The foliage is rarely attacked by insects. Their graceful habit, slender and often pendulous branches, and their picturesque white trunks, make them conspicuous marks on any landscape. 6 to 8 feet, \$2.50 each.



WHITE BIRCH

Of wonderful grace and beauty. Tall, vigorous with slender branches foliage colors brilliant in fall, and its bare white trunks and branches are very beautiful in winter. 6 to 8 feet, \$1.50 each.



Flowering Crabs



BECHTEL'S—Pale pink double flowering sweet scented flowers; plant of an upright habit. Can be used as specimen plants. Very attractive in groups. 3 to 4 feet, \$1.50 each.

FLORIBUNDA—Bright pink flowers upon opening turning to pure white. Small yellow fruit in the autumn. 3 to 4 feet, \$1.50 each.

PARKMANI—A broad, spreading form with very bright rose colored flowers of a semi-double form. 3 to 4 feet, \$1.00 each.

ATROSANGUINEA—Beautiful rose-pink flowers during the blooming season. Tree grows into a spreading form that is very attractive. 3 to 4 feet, \$1.50 each.

ELEYI—This is a purple-leaved, vigorous growing Crab Apple of recent introduction from England. The flowers are single, of deep pink or red color. This is a distinctly valuable Flowering Crab and has purplish red foliage, as well as the attractive red flowers. 2 to 3 feet, \$2.00 each.

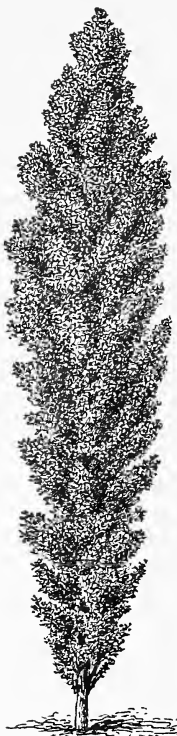
ALDENHAMENSIS—The Aldenhamensis is a new Flowering Crab originating as a chance hybrid on the place of Hon. Vicary Gibbs at Aldenham, England. This is considered the finest of all the red-flowered Crab Apples flowering after most of the other Crabs have finished. Double red. 2 to 3 feet, \$2.00 each.

POPLAR

LOMBARDY (Nigra var. Italica)—One of the characteristic trees of Italy. With age, the Lombardy Poplar becomes one of the most striking and picturesque trees, particularly when some of the sprouts are allowed to grow about the old stock. Excellent for landmarks. 6 to 8 feet, 50c each; 8 to 10 feet, \$1.00 each; 10 to 12 feet, \$1.25.

TULIP TREE

YELLOW WOOD (Liriodendron tulipifera)—Tall, handsome, hardy, ornamental, pyramidal habit, rapid growth. Has clean foliage, light bluish green; rarely attacked by insects; fragrant yellow and orange flowers in June. 6 to 8 feet, \$1.50 each.



Lombardy Poplar

EUROPEAN PLANE

EUROPEAN PLANE—Also called European Sycamore, noted for its beauty both in Europe and America. 6 to 8 feet, \$1.50 each; 8 to 10 feet, \$2.00 each.

AMERICAN PLANE

SYCAMORE (Americanus)—Widely planted. The bark is picturesquely shaded with gray and white. 6 to 8 feet, \$1.00; 8 to 10 feet, \$1.25; 10 to 12 feet, \$1.60.

WEeping MULBERRY

(Alba, var. Tartarica Pendula)—We recommend this as one of the thriest, hardest and most beautiful of the weeping trees, with slender, willow branches that sweep the ground, forming a beautiful tent of green. 2-year heads, \$3.50 each.

SPRING HILL NURSERIES,
Tippecanoe City, Ohio

Gentlemen:

Have received my order No. C-12185 in fine shape and got all the trees, shrubs, etc. planted before a soaking rain. All were so large and extra good looking. I thank you very much for sending such nice ones, also, for the extras.

Yours truly,

Mrs. O. G. Yancey,
Parsons, Kansas.

WEeping WILLOW

GOLDEN WEeping (Elegantissima)—A strong and the most vigorous grower of all weeping willows. Used for planting in low places or on the banks of streams, springs, lakes or ponds, making a very beautiful effect. 6 to 8 feet, \$1.00 each.

WISCONSIN WEeping (Dolorosa)—A weeping tree of rarely more than forty feet in height. The branches are long, slender and pendulous. Trees are quite hardy and will stand planting in the northern states. 6 to 8 feet, \$1.00 each.

BABYLONIAN—A beautiful weeping tree with long drooping branches sometimes 30 feet long. Sways gently with the wind and is most desirable. 6 to 8 feet, \$1.00 each.

JAPANESE FLOWERING CHERRY

Also called the Rose Flowering Cherry. The most notable trees of this group in the United States are at Washington, D. C. This collection of trees was presented to our nation by the City of Tokio, Japan. They were planted along the Potomac River Drive, and now since they have come into bloom, are visited by everybody in Washington during the blooming season. The fame of these Cherries has spread all over the United States, and as they are hardy everywhere they should be largely planted.

WHITE FLOWERING CHERRY (Cerasus Avium Alba)—Beautiful small trees absolutely covered with flowers in the springtime. They are of very easy culture and will do well in any location where the soil is fertile and well drained. Flowers of this variety are pure white and are found in clusters of every twig. 3 to 4 feet, \$2.00 each; 3 for \$5.00.

PINK FLOWERING CHERRY (Cerasus Avium Rosea)—These trees are covered with flowers of a deep rose color, in clusters all over the trees. Has the same habit otherwise as the White Flowering. 3 to 4 feet trees, \$2.00 each; 3 for \$5.00.



Sugar Maple



FRUIT TREES

APPLES—King of Fruits

Farmers and fruit growers have found that orchards well cared for have given larger net returns per acre, during a series of years, than any other crops they have grown. There never has been a time when an orchard could be planted with a greater assurance of profit than now.

LIST OF VARIETIES:

Baldwin	Northern Spy
Banana	Red Astrachan
Delicious	Rome Beauty
Duchess	Rambo
Early Harvest	Stayman Winesap
Grimes Golden	Transcendent Crab
Golden Winesap	Wealthy
Jonathan	Whitney Crab
McIntosh	Wolf River
Maiden Blush	York Imperial
	Yellow Transparent

CHERRY TREES

A good Cherry orchard for commercial purposes is one of the most profitable ventures a farmer can undertake, because there is no other fruit so much in demand at such good prices. The trees are very thrifty and prolific, bearing large crops annually.

The fruit is easily picked and it is always in great demand in its season, brings prices amply sufficient to repay the investment and give fancy profits. No home orchard is complete without some Cherry trees.

LIST OF VARIETIES:

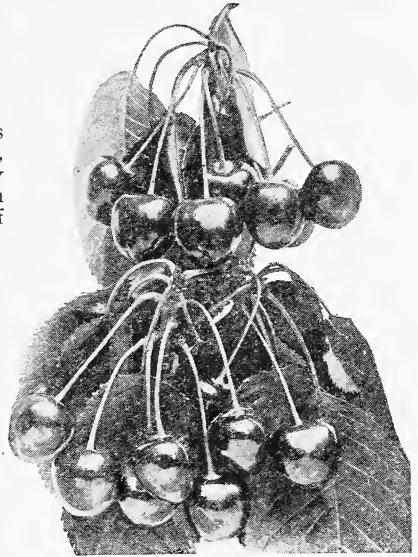
Black Tartarian	Governor Wood
Early Richmond	Large Montmorency
	Yellow Spanish

PEACHES

The nature and quality of the Peach is so well and universally known that it needs no word of introduction of commendation from us. Its importance as one of the necessary luxuries of the home is keenly felt by every family and was never more emphasized than at the present when the scarcity and high prices put it beyond the reach of everyone, who does not have his own trees.

LIST OF VARIETIES:

Belle of Georgia	J. H. Hale
Carman	Kalamazoo
Crawford's Early	Late Crawford
Champion	Lemon Free
Early Elberta	Rochester
Elberta	Salwey
Fitzgerald	Wilma
	Engle Mammoth



Early Richmond Cherry

PLUMS

Plum trees are often called the poor man's tree because they require so little room to grow and are always such prolific bearers. The markets demand for high-grade Plums is almost unlimited, and for dessert, cooking and canning, no fruit is more delicious.

Use Plum trees to fill the places on your farm where other fruit trees will not have room to grow. Plant a commercial orchard of Plums; give it good attention and it will bring you large profits and prove a good investment. Fruit prices this year are very high—and a very small acreage of bearing trees.

LIST OF VARIETIES:

Yellow Egg	Bradshaw
Abundance	Shipper's Pride
German Prune	Damson
	Lombard

PEARS

Our Pear trees are of the finest quality for transplanting, for they are well developed, stocky trees. In the course of five years they will be bearing a fine crop of fruit.

We have both standard and dwarf varieties. For the permanent orchard we recommend the standard varieties, the dwarf being better for small lot.

LIST OF VARIETIES:

Anjou	Duchess
Bartlett	Flemish Beauty
Clapp's Favorite	Kieffer

PRICES ON ALL FRUIT TREES

	Feet	Each	10	25	100
Apples	1-yr. 2 to 3	25c	\$2.00	\$ 4.00	\$15.00
Apples	1-yr. 3 to 4	40c	3.25	6.50	25.00
Apples	2-yr. 3 to 4	55c	4.00	10.00	30.00
Cherries	2-yr. 2 to 3	40c	3.50	8.50	34.00
Cherries	2-yr. 3 to 4	60c	5.50	12.50	48.00
Peaches	1-yr. 2 to 3	30c	2.75	5.00	15.00
Peaches	1-yr. 3 to 4	50c	4.00	9.00	25.00
Pears	2-yr. 3 to 4	50c	4.50	10.00	
Plums	2-yr. 3 to 4	45c	4.00	9.00	

WE PAY POSTAGE

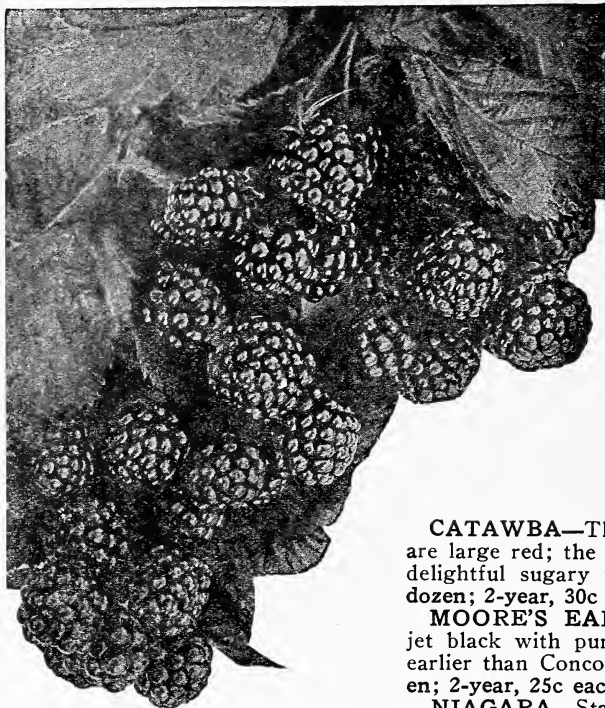
ON ALL 2 TO 3 AND 3 TO 4 FT. FRUIT TREES

	Feet	Each	10	25	100
Apples	2-yr. 4 to 5	60c	\$4.50	\$10.00	\$32.50
Apples	2-yr. 5 to 7	80c	6.50	15.00	45.00
Cherries	2-yr. 4 to 6	85c	7.50	18.00	60.00
Peaches	1-yr. 4 to 6	60c	5.00	12.50	40.00
Plums	2-yr. 4 to 5	55c	5.00	11.00	
Pears	2-yr. 4 to 5	50c	4.50	11.00	
Pears	2-yr. 5 to 7	90c	8.00	19.00	

SHIPPED BY EXPRESS

(Not Prepaid)

ALL 4 TO 5 AND 5 TO 7 FT. FRUIT TREES



SMALL FRUITS

POPULAR DELICIOUS FRUIT

GRAPES—For all Purposes

AGAWAM—Deep red or maroon. Large, meaty berries borne in large bunches. 1-year, 25c each; \$2.00 per dozen; 2-year, 30c each; \$2.50 per dozen. Prepaid.

CONCORD—Keeps well, ships well and sells well. Bunches big, berries are juicy, sweet and delicious, dark blue, Concord overcomes local Grape trouble and is safe to plant. 1-year, 20c each; \$1.50 per dozen; \$10.00 per 100; 2-year, 25c each; \$2.00 per dozen. Prepaid.

CATAWBA—The last to ripen; bunch and berries are large red; the flesh is juicy, pulpy and possesses a delightful sugary flavor. 1-year, 25c each; \$2.00 per dozen; 2-year, 30c each; \$2.50 per dozen. Prepaid.

MOORE'S EARLY—Medium bunch; berry large, jet black with purple bloom; ripens fully two weeks earlier than Concord. 1-year, 20c each; \$2.00 per dozen; 2-year, 25c each; \$2.25 per dozen. Prepaid.

NIAGARA—Standard white Grape. Both bunch and berries are large to very large. Flesh is firm, juicy without much pulp; flavor is of the very best,

and does not resemble any other sort. The vine is hardy, vigorous and extremely productive. Frankly speaking it is hard to describe Niagara, so numerous are its points of superiority. 1-year, 20c each; \$2.00 per dozen; 2-year, 25c each; \$2.25 per dozen. Prepaid.

SALEM—Bunch large and heavy; berries round, red and an inch thick; flesh tender; flavor sweet, aromatic. For table it is hard to beat. 1-year, 20c each; \$2.00 per dozen; 2-year, 25c each; \$2.25 per dozen. Prepaid.

WORDEN—A black Grape that resembles Concord closely but with more tender pulp, higher quality and ripens a week to ten days earlier. A little larger in both bunch and berry than Concord. 1-year, 20c each; \$2.00 per dozen; 2-year, 25c each; \$2.25 per dozen. Prepaid.

SPECIAL PRICES ON 1000 LOTS

RASPBERRIES AND BLACKBERRIES

CARDINAL RASPBERRY—Dark red or almost purple berries through a long season. Fine quality. \$1.25 per 25; \$3.00 per 100; Prepaid.

CUMBERLAND RASPBERRY—The largest of all blackcaps; firm and a good shipper, and one of the most profitable as a market berry. \$1.25 per 25; \$3.00 per 100. Prepaid.

KANSAS RASPBERRY—Plant is a strong grower and will stand extremes of weather. \$1.25 per 25; \$3.00 per 100. Prepaid.

CUTHBERT RASPBERRY—Fruit large, dark crimson, firm sweet, rich, highly flavored, and as beautiful as strawberries. \$1.25 per 25; \$3.00 per 100. Prepaid.

LATHAM RASPBERRY (Everbearing)—Has proven to be the very best of all the everbearing sorts for certain sections. It is a splendid, strong growing variety and produces immense quantities of bright red extra large berries from June until freezing weather. \$1.75 for 25; \$5.00 per 100. Prepaid.

ELDORADO BLACKBERRY—Fruit very large, jet black, good shipper, good quality, and a great producer. We personally recommend this variety above any other that is offered. Comparatively new but has proven itself to be the best of all varieties. 50c per 10; \$4.25 per 100. Prepaid.

LUCRETIA DEWBERRY—10 plants for 50c; 100 plants for \$3.00. Prepaid.

ASPARAGUS PLANTS—\$1.00 per 25; \$2.00 per 100; \$16.00 per 1000. Prepaid.

RHUBARB PLANTS—15c each; \$1.00 per 10; \$7.50 per 100. Prepaid.



A PAGE OF BARGAINS

APPLE TREES

Our Selection of Varieties
Good varieties for you, in our first quality, 2 and 3 foot grade. They will bear crops of fruit as quickly as larger trees and are more economical to plant.

2 Early - 2 Fall - 6 Winter
10 POSTPAID FOR \$1

GRAPES

Concord

Strong plants of this famous variety. Everybody should have some grapes. This bargain will please you in every way, fruit matures early, keeps well.

4 POSTPAID FOR 50c

EVERGREENS

10-12 in. and 4 Year Old

The plants we are offering here have been transplanted and have good root systems. These nice plants will grow in a few years to be worth ten times what we are asking for them.

5 POSTPAID FOR \$1

EXTRA SPECIAL SHADE TREES Silver Maple

Quickest growing shade trees. The value of these trees is twice the price asked. First class, 6 to 8 ft. trees for

2 Not Prepaid For \$1.20
5 Not Prepaid For \$2.50

HYDRANGEA

Hills of Snow

These strong plants will give you flowers the first year. They will do well in the shade or sun, and bloom from July until frost.

3 POSTPAID FOR 50c

PERENNIALS

Old-Fashioned Flowers
Our Selection

All good varieties, transplanted field grown plants, that will bloom for you next year. Very popular. Our stock includes the best varieties.

10 POSTPAID FOR \$1

SHRUBS

Our Selection of Varieties
All good varieties, strong field grown plants, most of them will bloom the first year. These offers acquaint you with our stock. Plantings of shrubs add greatly to the value of your home.

6 POSTPAID FOR \$1

VINES

Our Selection

These varieties will be made up from the page of vines in our catalogue. They are good two-year-old plants and a big value for the money. Vines are very desirable.

4 POSTPAID FOR \$1

SPIREA

Van Houttei

The get acquainted offer on Spires that will bloom the first year, will save you money. They should be planted around every home for quick and lasting effects.

3 POSTPAID FOR 50c

ORIENTAL POPPY

One of the most gorgeous flowers grown. These are well rooted plants grown in beds so they will be sure to grow and bloom for you.

2 POSTPAID FOR 25c

5 POSTPAID FOR 50c

HARDY CLIMBING SWEET PEAS

Hardy Sweet Peas bloom all season through. The individual flowers are large and more gorgeous than the annual Sweet Pea. They are hardy and come up from the roots each year without replanting. They stand hot weather and will give you cut flowers all summer.

1 Red - 1 White - 1 Pink

3 POSTPAID FOR 25c

1921 SEP 1 1920

RED LEAVED BARBERRY

MOST POPULAR NEW SHRUB



It is only once in a lifetime that a really worth while, outstanding novelty in hardy shrubs is introduced, and in this new Barberry we have such a plant.

It is similar in all respects to the green-leaved Japanese Barberry which is so popular for mixing in the shrubbery border, as single specimens, or for planting in clumps on the lawn, as well as for foundation plantings and for hedges, but the foliage of this new variety is of a rich, lustrous, bronzy red, similar to the richest red-leaved Japanese Maples. However, unlike these and other colored shrubs in which the coloring fades or disappears entirely as the season advances, this new Barberry becomes more brilliant and gorgeous throughout the summer, and in the fall its foliage changes to vivid scarlet, and red shades, more brilliant and more effective than in the ordinary Japanese Barberry. In this coloring it is unequalled by any other shrub and is followed by the

same brilliant scarlet berries common to the type, which remain on the plant the entire winter. All that is required to develop its brilliant coloring at all seasons is that it be planted in full exposure of the sun. Plant one foot apart for hedges.
PRICE: 8 to 12 inch plants, 28c each; 10 for \$2.50; 25 for \$6.00. WE PAY POSTAGE.

FALL FLOWERING CROCUS

(COLCHICUM AUTUMNALE)

Our illustration is from a photograph of this wonder of the floral kingdom. Blooms without vase, soil, water, or care. Unique for table, room, or window decoration. Rosy-tinted blossoms shade to a pearly-white and exhale refreshing fragrance.

Simply place the bulb in a dish, bowl, saucer, or on the table or window sill in a little light and watch its beauty unfold. As the blooms fade and drop, cut them off and others will follow in quick succession, each bulb producing from six to fifteen flowers.

When the blooming has ceased, the bulbs may be planted in the open garden or lawn, where the following spring they will develop a beautiful, deep-colored foliage.

If planted in fertile soil they will reproduce themselves each year and will make an attractive display of flowers in the fall. Or they can be dug up in July, dried and allowed to bloom indoors out of the soil.

THEY WILL GIVE LOTS OF PLEASURE. We know of no other flower that will be as interesting and will give you the pleasure these bulbs will.

Colchicum
IT REQUIRES
No Soil, No Water, No Care
Surprising and Beautiful
PRICE (Large Bulbs)
Each 30c postpaid.
Four Bulbs \$1.00 postpaid
Ten for \$2.00 postpaid

